



papiNet

**General description of
logistics processes and eDocuments**

Date 2011-02-22

Copyright

Copyright 2000 – 2009 papiNet G.I.E (“papiNet”), International Digital Enterprise Alliance, Inc. (“IDEAlliance”), and American Forest & Paper Association, Inc. (“AF&PA”), collectively “Copyright Owner”. All rights reserved by the Copyright Owner under the laws of the United States, Belgium, the European Economic Community, and all states, domestic and foreign. This document may be downloaded and copied provided that all copies retain and display the copyright and any other proprietary notices contained in this document. This document may not be sold, modified, edited, or taken out of context such that it creates a false or misleading statement or impression as to the purpose or use of the papiNet specification, which is an open standard. Use of this Standard, in accord with the foregoing limited permission, shall not create for the user any rights in or to the copyright, which rights are exclusively reserved to the Copyright Owner.

papiNet (formerly known as the European Paper Consortium for e-business - EPC), IDEAlliance (formerly known as the Graphic Communications Association - GCA), the parent organisation of IDEAlliance the Printing Industries of America (PIA), the American Forest and Paper Association (AF&PA), and the members of the papiNet Working Group (collectively and individually, "Presenters") make no representations or warranties, express or implied, including, but not limited to, warranties of merchantability, fitness for a particular purpose, title, or non-infringement. The presenters do not make any representation or warranty that the contents of this document are free from error, suitable for any purpose of any user, or that implementation of such contents will not infringe any third party patents, copyrights, trademarks or other rights. By making use of this document, the user assumes all risks and waives all claims against Presenters.

In no event shall Presenters be liable to user (or other person) for direct, indirect, special or consequential damages arising from or related to any use of this document, including, without limitation, lost profits, business interruption, loss of programs, or other data on your information handling system even if Presenters are expressly advised of the possibility of such damages.

Copyright	2
General description of logistics processes and messages	4
1 Parties involved in the supply chain	4
2 The supply chain.....	8
2.1 UseCase: Transport mode 1; by road	9
2.2 UseCase: Transport mode 1; by road with 3 rd party logistics provider.....	11
2.3 UseCase: Transport mode 2, by rail, Rail 11 set up	14
2.4 Use case: Transport mode 2 & 3; by sea goods carrier on vessel	18

General description of logistics processes and messages

This document gives a general description of the most typical logistics processes within the supply chain of paper and wood based products and shows how papiNet messages can be used in the processes.

The aim of this document is to give general information and familiarize the reader with different use cases of the papiNet messages.

1 Parties involved in the supply chain

Note: These definitions are more detailed from the logistic view than the papiNet data dictionary.

The supply chain covers of a number of parties and logistics transactions. The logistics parties involved may be:

Seller

The seller is the party commercially responsible for selling paper and wood based products or services to the customer.

Supplier

The supplier is the party commercially responsible for supplying paper and wood based products or services to the customer. In many cases the supplier is the same party as the seller.

Buyer

The customer is the party buying and paying for the products or services. Sometimes the customer is the end user, such as a construction company, retailer, publisher, merchant or a printer. In other cases the customer is a wholesaler who, in turn, will act as a seller towards end users.

ShipTo

The name and/or address to which the products should be delivered by the supplier.

Forwarder #

(Synonymous: Freight Forwarder)

The logistic partner arranging the carriage of products, including connected services and/or associated formalities, on behalf of a consignor or consignee. This can be for one or many transport legs

= Transport leg for the specific Forwarder in the use cases

Consignor #

The consignor, in a contract of carriage, is the party sending a shipment to be delivered whether by land, sea or air. Some carriers, such as national postal entities, use the term "sender" or "shipper" but in the event of a legal dispute the proper and technical term "consignor" will generally be used.

Consignee #

In a contract of carriage, the consignee is the party to whom the shipment is to be delivered whether by land, sea or air.

Carrier #

The logistic partner who, in a contract of carriage, undertakes to perform or to procure the performance of carriage, by rail, road, sea or by a combination of such modes, for one or many transport legs

= Transport leg for the specific Carrier in the use cases

In the case of road transport the carrier is named **Haulier**.

Port Operator

The logistic partner that is handling the products at a port

Note: not yet defined in the papiNet data dictionary.

Port

A location containing one or more harbours on either end of a transportation line including servicing and handling facilities.

TERMINALS



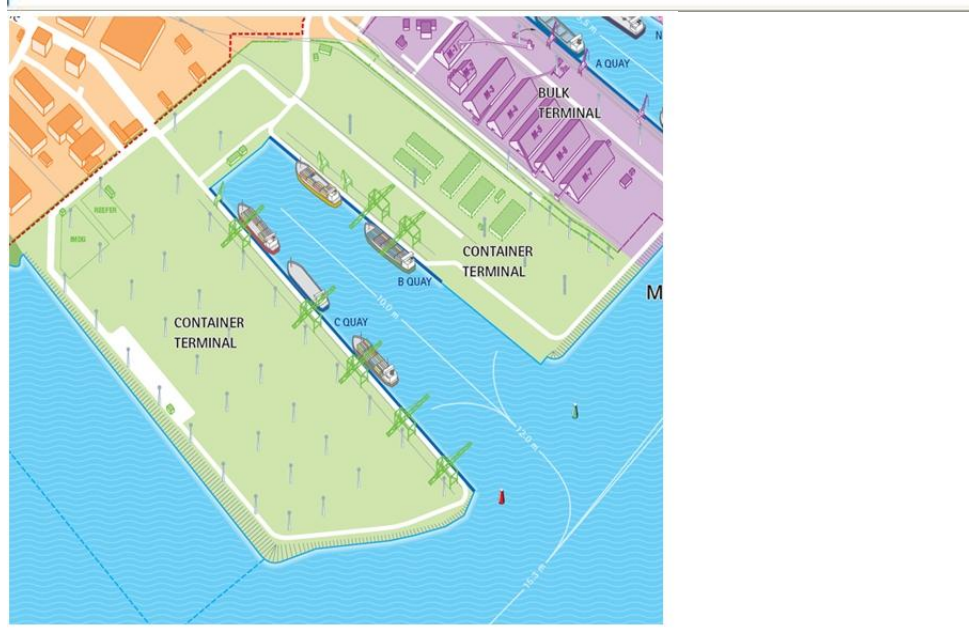
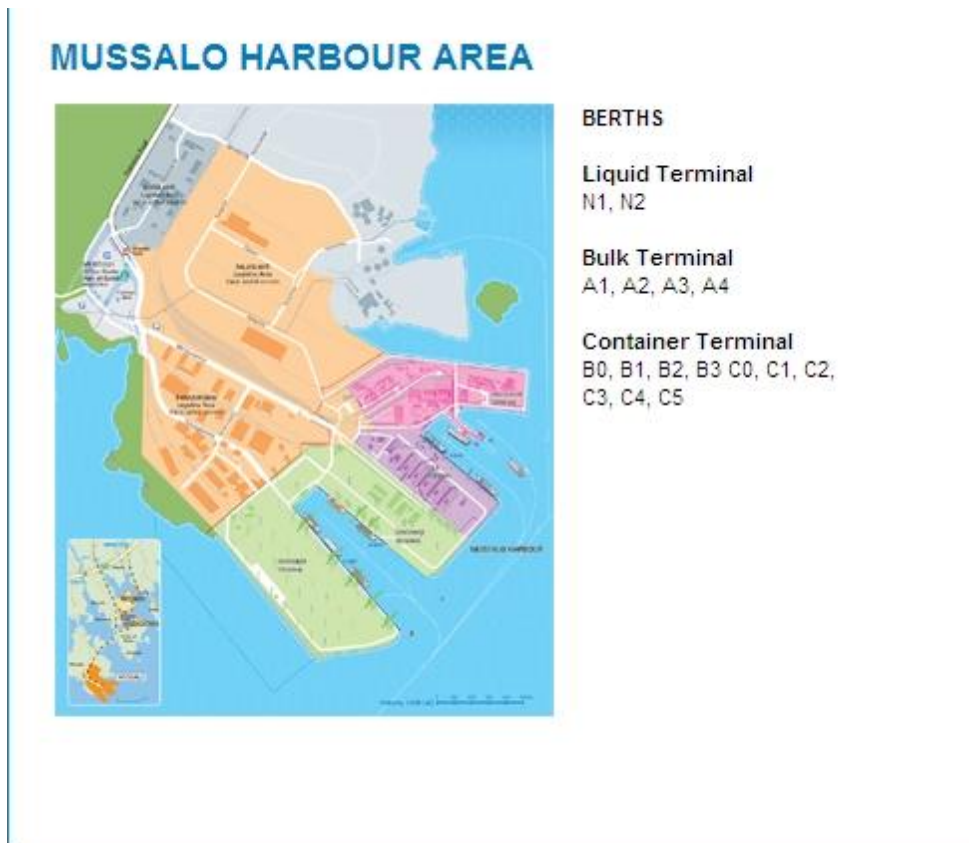
Example Kotka Port

Terminal Operator

The logistic partner that is handling the products at a terminal

Terminal

A location on either end of a transportation line including servicing and handling facilities. There can be multiple terminals in one port.



Exaplme of terminals at Kotka port

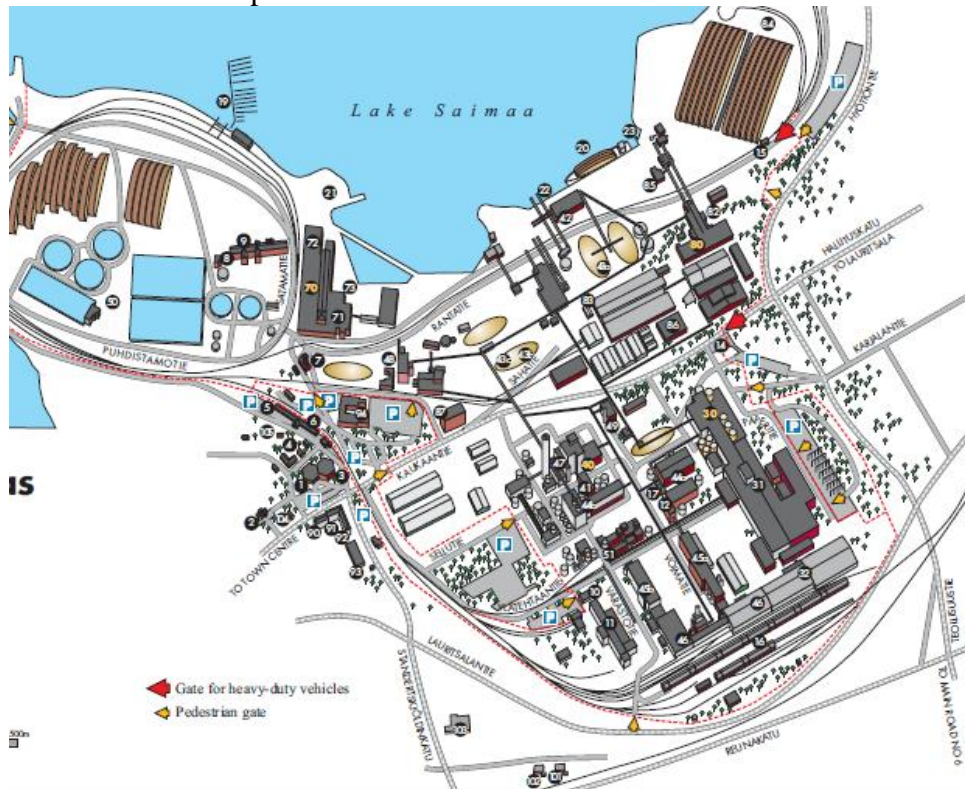
Warehouse Operator

The logistic partner that is handling products at a Warehouse

Note: not yet defined in the papiNet data dictionary.

Warehouse

A building specially designed for receipt, storage and handling of products. There can be multiple warehouses in one terminal.



Example of different warehouses at a mill

Sender

The party who is sending a document/message

Receiver

The party who is receiving a document/message

2 The supply chain

This document describes three of the most common ways of distributing paper and wood based products from the *supplier* to the *ship to*. The different transport modes are by road, rail or sea. Each of the modes has some specific features hence they are described separate in this document. For each mode it is also clarified the parties involved and the papiNet messages that are recommended to be used in the different documents transactions.

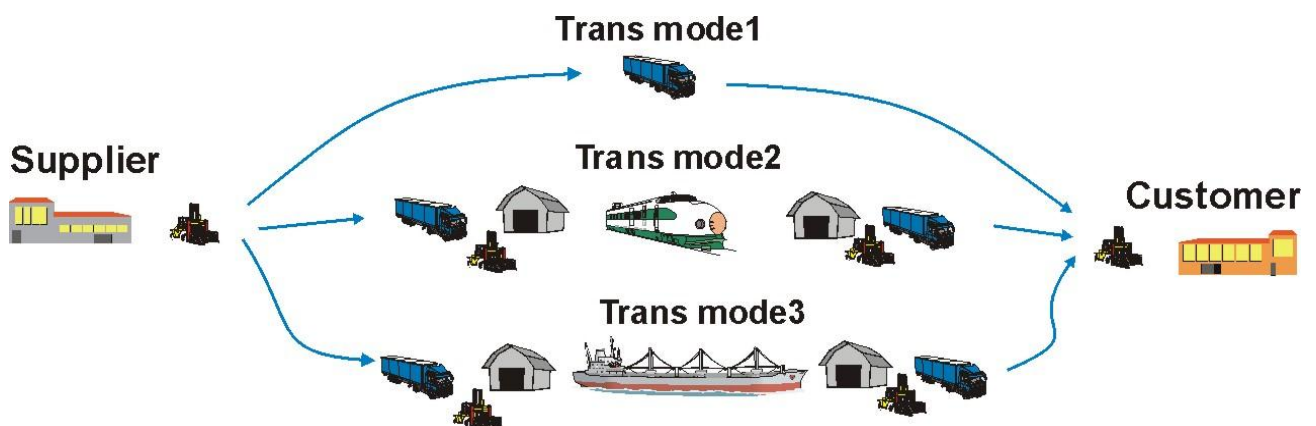


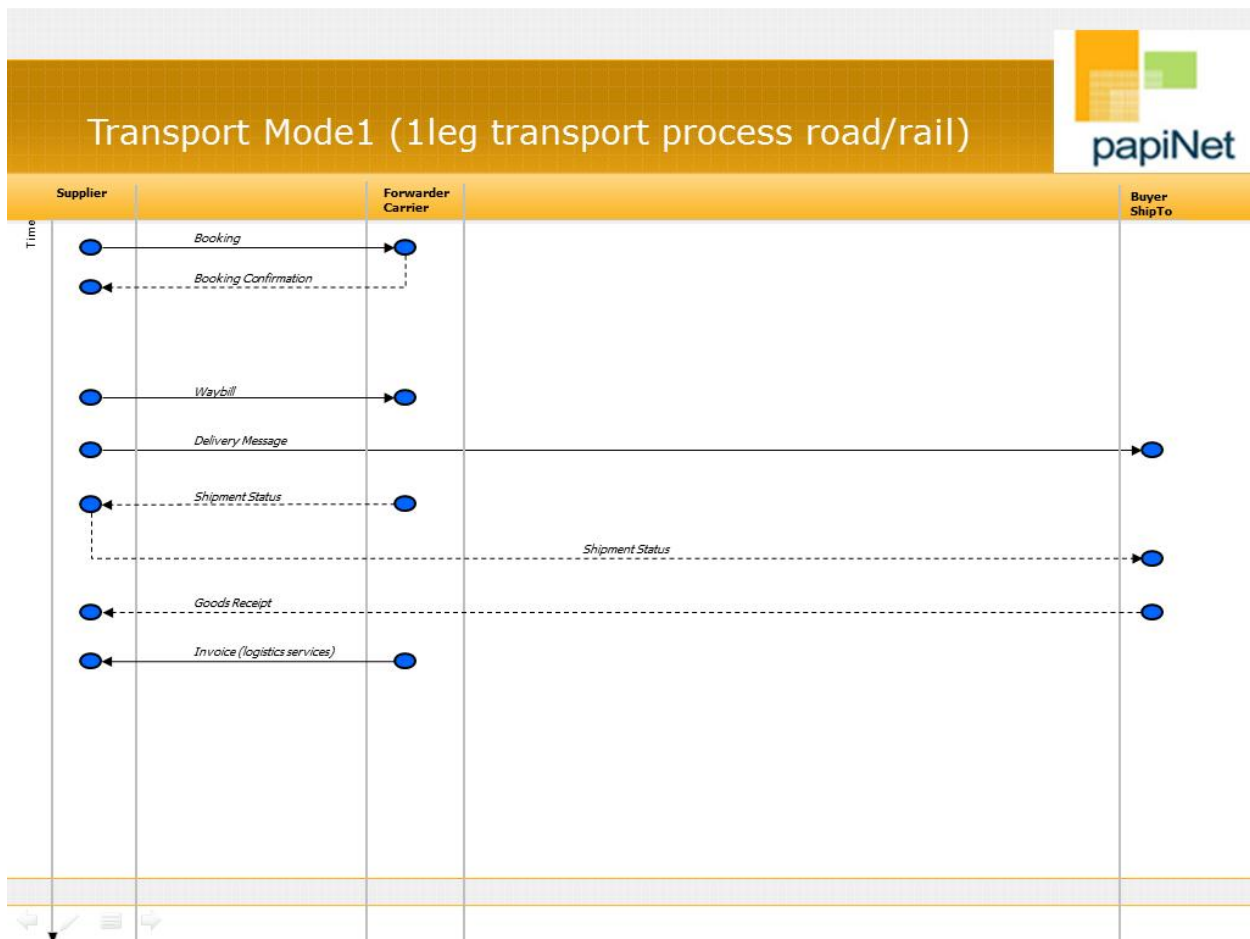
Figure 1 Three of the most common ways of distributing paper and wood based products

2.1 UseCase: Transport mode 1; by road

Note: Train as main carriage can be considered identical to truck as main carriage

Conditions for the specific use case described are:

- There exists an “Order” between the *seller* and the *buyer* of the products
- The *buyer* asks the seller/supplier to deliver a specific quantity of products to be shipped during a specific time period
- The *seller/supplier (consignor)* is taking care of the logistics according to the terms of delivery
- The products are sent directly to the *customer* via one or more shipments (no co-loading)
- When the products are delivered, an “Invoice” for the products is issued



Sender of the message	Receiver of the message	Process Step	Message	Type
Booking of transportation				
Seller/Supplier	Forwarder/ Carrier	Booking The <i>seller/supplier</i> is booking a shipment for the whole volume with the <i>forwarder</i> . The shipment can be carried out by one or more trucks. The <i>forwarder</i> is arranging the carriage of products with a <i>carrier</i> . Trigger Transport planning is created in the suppliers ERP-system	LoadTender	Booking
Forwarder/ Carrier	Seller/Supplier	Booking confirmation The <i>forwarder/carrier</i> is confirming the arrangement of the carriage of products with a specific <i>carrier</i> . Trigger All arrangements are done by the <i>forwarder/carrier</i> in their ERP-system	LoadTender-Response	Booking-Confirmation
Products are sent from the supplier				
Seller/Supplier	Forwarder/ Carrier	Waybill For each shipment a waybill is sent to the <i>forwarder/carrier</i> . Trigger Truck leaves with one shipment	DeliveryMessage	Waybill
Documents to the buyer				
Seller/Supplier	Buyer/ShipTo	DeliveryMessage <i>Buyer/ShipTo</i> receives specification of the delivered products, for each shipment, to make the products receipt at arrival of the packages. The specification includes the detailed package information. This can be one or many documents/messages depending on the number of shipments. Trigger Truck leaves with one shipment	DeliveryMessage	DeliveryMessage
Forwarder/ Carrier	Seller/Supplier	ShipmentStatus The <i>forwarder/carrier</i> is confirming the arrival of the carrier at the <i>shipto</i> or any other events during the transport. Trigger An event occurs.	ShipmentStatus	
Seller/Supplier	Buyer/ShipTo	ShipmentStatus (optional) The <i>carrier</i> is confirming the arrival of the products at the <i>forwarder</i> or any other events during the transport. Trigger An event occurs.	ShipmentStatus	
Buyer/ShipTo	Seller/Supplier	GoodsReceipt (optional) The <i>buyer/shipto</i> is confirming the arrival of the products. Trigger Products arrived at <i>shipto</i> party	GoodsReceipt	
Forwarder/ Carrier	Seller/Supplier	Invoice of logistic services The <i>forwarder/carrier</i> is invoicing the logistic services to the <i>seller/supplier</i> . Trigger	Invoice	Invoice

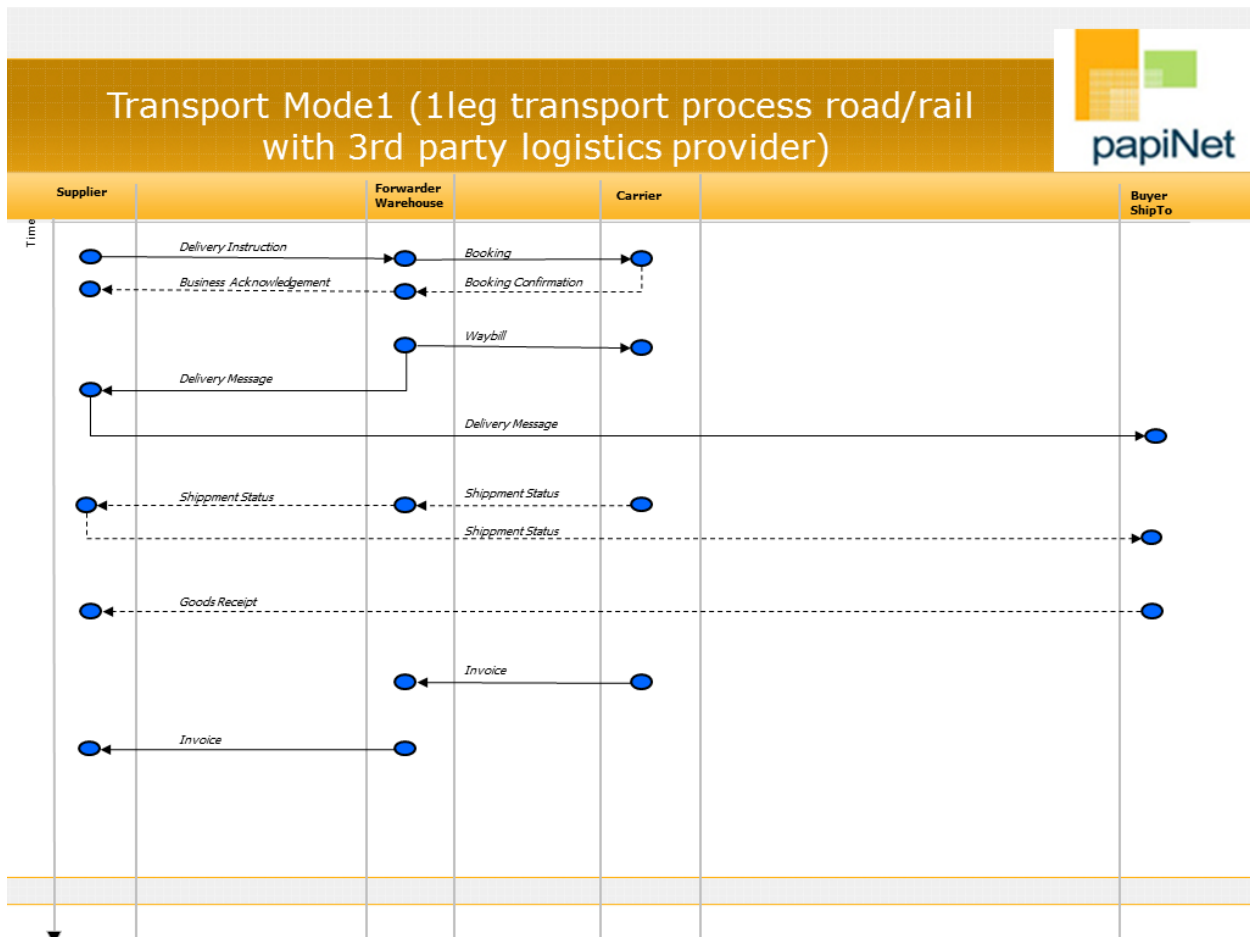
Sender of the message	Receiver of the message	Process Step	Message	Type
		According to an agreement between the parties.		
Business acknowledgement (Hand shake function - optional)				
Receiver	Sender	Business acknowledgement <i>Receiver confirms that that they have processed a message</i>	Business-Acknowledgement	

2.2 UseCase: Transport mode 1; by road with 3rd party logistics provider

Note: 3rd party logistics provider is responsible for the logistics planning and execution.
Train as main carriage can be considered identical to truck as main carriage

Conditions for the specific use case described are:

- There exists an “Order” between the *seller* and the *buyer* of the products
- The *buyer* asks the seller/supplier to deliver a specific quantity of products to be shipped during a specific time period
- The *seller/supplier (consignor)* is taking care of the logistics according to the terms of delivery
- The products are sent directly to the *customer* via one or more shipments (no co-loading)
- When the products are delivered, an “Invoice” for the products is issued



Sender of the message	Receiver of the message	Process Step	Message	Type
Booking of transportation				
Supplier	Forwarder	Booking The <i>supplier</i> is booking a delivery for the whole volume with the <i>forwarder</i> . The shipment can be carried out by one or more trucks. Trigger Transport planning is created in the suppliers ERP-system	Delivery-Instruction	Delivery-Instruction
Forwarder	Carrier	Booking The <i>forwarder</i> is booking transportation with the <i>carrier</i> . The shipment can be carried out by one or more vehicles. Trigger A "Transportation Order" is created in the ERP-system of the forwarder	LoadTender	Booking
Carrier	Forwarder	Booking confirmation The <i>carrier</i> is confirming the arrangement of the transportation. Trigger All arrangements are done by the <i>carrier</i> in their ERP-system	LoadTender-Response	Booking-Confirmation
Forwarder	Seller/Supplier	Business Acknowledgement The <i>forwarder</i> is confirming the arrangement of the transportation. Trigger All arrangements are done by the <i>forwarder</i> in their ERP-system	Business Acknowledgement	
Products are sent from the warehouse				
Forwarder	Carrier	Waybill For each delivery a waybill is sent to the <i>carrier</i> . Trigger Truck leaves the warehouse with one shipment	DeliveryMessage	Waybill
Forwarder	Seller/Supplier	DeliveryMessage For each shipment a DeliveryMessage is sent to the <i>seller/supplier</i> . Trigger Truck leaves the warehouse with one shipment	DeliveryMessage	DeliveryMessage
Documents to the buyer				
Seller/Supplier	Buyer/ShipTo	DeliveryMessage <i>Buyer/ShipTo</i> receives specification of the delivered products. The specification includes the detailed package information. This can be one or many documents/messages depending on the number of deliveries. Trigger Receipt of the DeliveryMessage from the forwarder	DeliveryMessage	DeliveryMessage
Carrier	Forwarder	ShipmentStatus The <i>carrier</i> is confirming the arrival of the products at the <i>forwarder</i> or any other events during the transport.	ShipmentStatus	

Sender of the message	Receiver of the message	Process Step	Message	Type
		Trigger An event occurs.		
Forwarder	Seller/Supplier	ShipmentStatus (optional) The <i>carrier</i> is confirming the arrival of the products at the <i>forwarder</i> or any other events during the transport. Trigger An event occurs.	ShipmentStatus	
Seller/Supplier	Buyer/ShipTo	ShipmentStatus (optional) The <i>carrier</i> is confirming the arrival of the products at the <i>forwarder</i> or any other events during the transport. Trigger An event occurs.	ShipmentStatus	
Buyer/ShipTo	Seller/Supplier	GoodsReceipt (optional) The <i>buyer/shipto</i> is confirming the arrival of the products. Trigger Products arrived at <i>shipto</i> party	GoodsReceipt	
Carrier	Forwarder	Invoice of logistic services The <i>carrier</i> is invoicing the logistic services to the <i>forwarder</i> . Trigger According to an agreement between the parties.	Invoice	Invoice
Forwarder	Seller/Supplier	Invoice of logistic services The <i>forwarder</i> is invoicing the logistic services to the <i>seller/supplier</i> . Trigger According to an agreement between the parties.	Invoice	Invoice
Business acknowledgement (Hand shake function - optional)				
Receiver	Sender	Business acknowledgement <i>Receiver</i> confirms that they have processed a message	Business-Acknowledgement	

2.3 UseCase: Transport mode 2, by rail, Rail 11 set up

Scope of Rail 11:

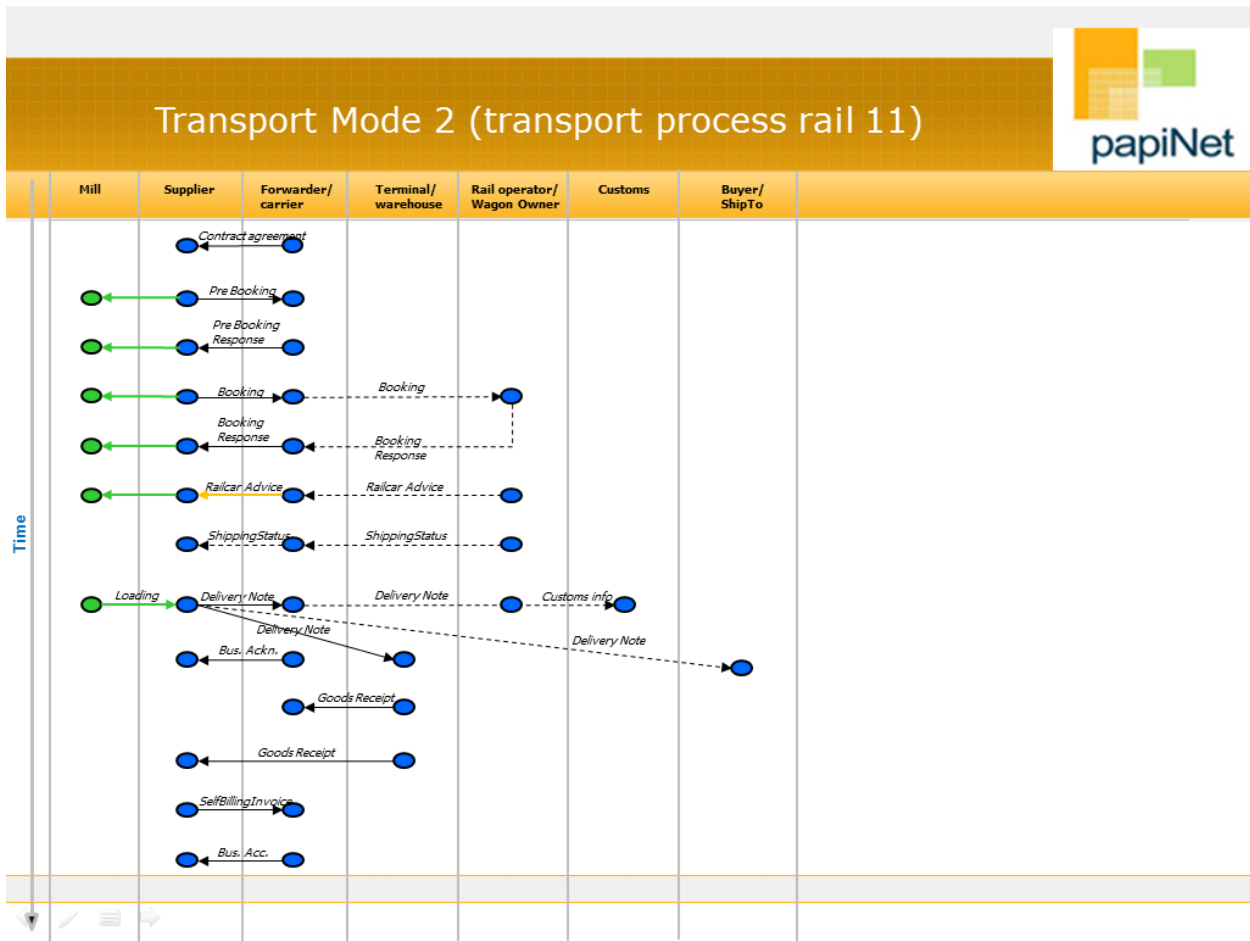
- Main transportation from Scandinavian mills to local distribution warehouses/terminals in Europe
 - Transfer between mill stock and terminal stock
 - Stock for customer Calloff deliveries

Involved parties:

- Supplier and the supplier mills
- Forwarder/carrier (also Train operators and wagon owners are involved , another messaging scope, but as sub-contractors to the forwarder, who acts like a forwarder/carrier)
- Distribution terminals

Conditions for the specific use case described are:

- Messaging scope is between Supplier, Forwarder/Carrier and Terminal operator
- There exists an “Order” between the *seller* and the *buyer* of the products
- The *buyer* has ordered a specific quantity of products to be available for delivery at/during a specific time/period.
- The *Forwarder/Carrier (consignee)* is responsible for coordination and handling towards train operators and wagon owner. This is outside the messaging scope.
- The products are sent to a local stock point to enable local distribution to the *buyer*
- Products delivered to a terminal will later be used in a Calloff-delivery scenario



Use case 2.3 Rail transport booking process, Rail 11

Sender of the message	Receiver of the message	Process Step	Message	Type
Contract/price message				
Forwarder	Supplier	Contract agreement update The <i>forwarder</i> sends an updated contract and price agreement. Automatic update in Suppliers ERP. Basis for invoicing check or SelfBilling invoices. Trigger Contract agreement negotiated	RFQ	RFQ
Pre-Booking				
Supplier	Forwarder	Plan for rail transports 1-3 months The <i>Supplier</i> sends his plan for needs of transport capacity for the coming months, i.e. a preliminary transport schedule for forecasted volumes according to forwarder schemas. Trigger Revision of forecasts and sales plans	LoadTender	PreBooking
Pre-Booking response				
Forwarder	Supplier	Confirmation of planning	LoadTender	PreBooking

Sender of the message	Receiver of the message	Process Step	Message	Type
		The <i>Forwarder</i> sends a response to the Pre-Booking to the supplier. Accepting or amending his plans. Trigger PreBooking message and verification activities at Forwarder		confirmation
Booking				
Supplier	Forwarder	Plan transports are sent to forwarder Transport planning activities results in a final plan for transports and delivery and needed number of wagons to respective destinations are sent to forwarder latest 09.00 the day before loading. Trigger Transport planning activities	LoadTender	Booking
Booking response				
Forwarder	Supplier	Confirmation of booking The <i>forwarder</i> sends a confirmation of booking after checking with carrier that capacity is available. Trigger Booking message and confirmation from carrier.	LoadTender-Response	Booking Confirmation
RailCar advice				
Forwarder	Supplier	Allocated wagons information The <i>forwarder</i> sends information about wagons that will be used for the confirmed bookings in order to inform about the individual wagons. Information like wagon number/id, loading capacity, measures, breaking figures, wagon type etc. Trigger Planned wagons from Rail operator/wagon owner	Excel file Not a papiNet message as per yet!	RailCar advice
ShippingStatus				
Forwarder	Supplier	ShipmentStatus(optional) The <i>forwarder</i> sends an update on current status of the shipment in progress. Latest info would be Booking finalised with no errors. This could also be info when something goes wrong, delays, accidents etc. Used through the ongoing transport. Trigger Events that changes the status of the shipment in progress	ShipmentStatus	
Delivery Note				
Supplier	Forwarder Warehouse <i>Customer</i>	Loading and delivery from mill executed The <i>Mill</i> loads the wagon and the wagon is collected by the forwarder/carrier. Upon that event a delivery messages is created. This is sent to Forwarder to inform about the details of the transport and to have as basis for debiting and continued activities vs. authorities. A delivery message is also sent to the	Delivery Message	Delivery message

Sender of the message	Receiver of the message	Process Step	Message	Type
		<p>receiving terminal operator for information purposes. A delivery message can also be sent to the Buyer/Ship to for information purposes.</p> <p>Trigger Loading performed and executed. Systems updated and shipment left the mill.</p>		
Business Acknowledgement				
Forwarder	Supplier	<p>Acknowledgement of delivery message reception The <i>forwarder</i> sends a Business acknowledgement in order to allow for the supplier to secure that a Delivery message is sent. This info is vital for the Carrier, in order to be allowed to perform the transport as there are checks on weights vs. Wagon capacity etc. This info is sent from forwarder to carrier.</p> <p>Trigger Reception of delivery message</p>	Business acknowledgement	
GoodsReceipt transport				
Terminal operator	Forwarder	<p>Unloading report from terminal The <i>terminal operator</i> sends a Goods Receipt when the wagon is discharged to inform the forwarder that the wagon is now available for new missions.</p> <p>Trigger Wagon discharged at terminal</p>	GoodsReceipt	GoodsReceipt
GoodsReceipt products				
Terminal operator	Supplier	<p>Goods receipt report from terminal The <i>terminal operator</i> sends a a GoodsReceipt message to the supplier to confirm the reception of goods in the terminal in order to enable the supplier to update the stock levels with delivery information. Also deviations are reported, over- short landed, damages etc is accounted for in this message.</p> <p>Trigger Transport discharged and goods identified and inspected and put into storage</p>	GoodsReceipt	GoodsReceipt
SelfBilling Invoice				
Supplier	Forwarder	<p>Payment of transport costs to forwarder The <i>supplier</i> sends an invoice, SelfBilling to the forwarder based on contract agreements and performed shipments through the respective delivery notes and referred to respective bookings.</p> <p>Trigger Received GoodsReceipts and performed deliveries.</p>	Invoice	SelfBilling-Statement
BusinessAcceptance				
Forwarder	Supplier	<p>Confirmation of payment The <i>forwarder</i> sends a business acceptance message to confirm that the</p>	Business Acceptance	Business Acceptance

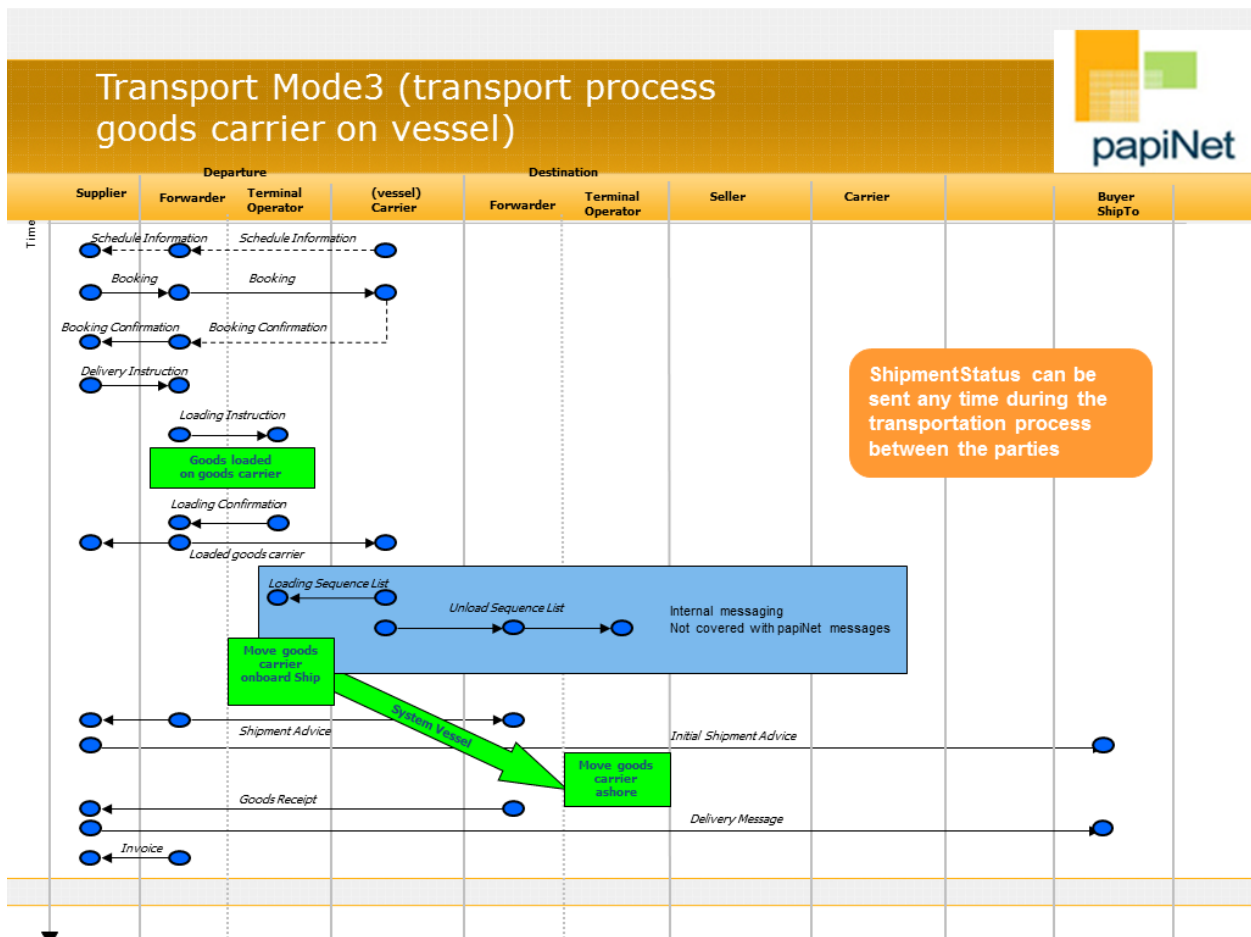
Sender of the message	Receiver of the message	Process Step	Message	Type
		invoice is received and correctly updated and hereby accepts the payment. If deviations, those are reported in the business acceptance. Trigger Reception of the SelfBilling invoice and checks versus contracts and delivery messages.		

2.4 Use case: Transport mode 2 & 3; by sea goods carrier on vessel

Note: Train as pre/post-carriage can be considered identical as truck as pre/post-carriage

Conditions for the specific use case:

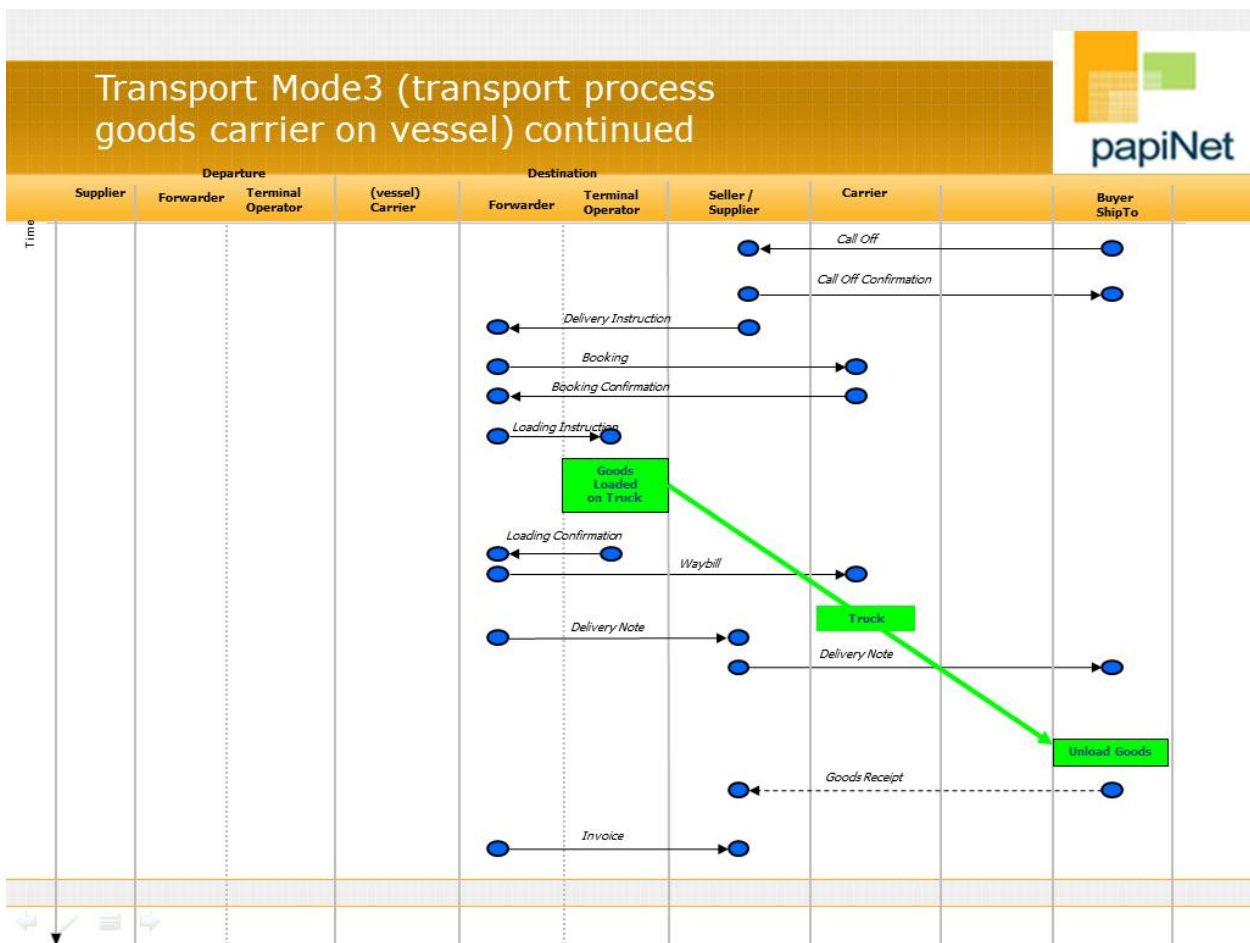
- There exists an “Order” between the *seller* and the *buyer* of the products
- The *buyer* asks the seller/supplier to deliver a specific quantity of products to be shipped during a specific time period
- The *seller/supplier (consignor)* is taking care of the logistics according to the terms of delivery
- The products are sent from the suppliers/mills warehouse to the port/terminal of departure. This can be done by one or many shipments by road/rail.
- The products are being shipped to the port/terminal of destination with one main shipment by sea
- When the products are delivered, an “Invoice” for the products is issued



Sender of the message	Receiver of the message	Process Step	Message	Type
Transportation 1st leg pre-carriage				
Booking of transportation				
Carrier (vessel)	Forwarder	Schedule Information (optional) The <i>vessel carrier</i> is informing the <i>forwarder</i> about vessel schedules and available space. Trigger According to the trading partner agreement	Voyage	
Forwarder	Seller/Supplier	Schedule Information (optional) The <i>forwarder</i> is informing the <i>seller/supplier</i> about vessel schedules and available space. Trigger According to the trading partner agreement	Voyage	
Seller/Supplier	Forwarder	Booking The <i>seller/supplier</i> is booking space on a vessel for a specific “ <i>call</i> ” (<i>voyage</i>). Trigger Transport planning is created in the suppliers ERP-system	LoadTender	Booking
Forwarder	Carrier (vessel)	Booking The <i>forwarder</i> is arranging the carriage of products with a <i>carrier</i> and is reserving space on the vessel. Trigger A “Transportation Order” is created in the ERP-system of forwarder.	LoadTender	Booking
Carrier (vessel)	Forwarder	Booking Confirmation The <i>carrier (vessel)</i> is making a confirmation on the reserved space on the vessel and adds additional information. Trigger The “Transportation Order” is being confirmed in the ERP system.	LoadTender-Response	Booking-Confirmation
Forwarder	Seller/Supplier	Booking Confirmation The <i>forwarder</i> is confirming on the reserved space on the vessel and adds additional information. Trigger The “Transportation Order” is being confirmed in the ERP system.	LoadTender-Response	Booking-Confirmation
Seller/Supplier	Forwarder	Delivery instruction The <i>seller/supplier</i> sends the delivery instruction specifying the planned deliveries for each buyer Trigger “Planning” in the ERP-system	Delivery-Instruction	Delivery-Instruction
Forwarder	Terminal Operator	Loading instructions The <i>forwarder</i> converts the delivery instructions to loading instructions for the terminal operator Trigger All arrangements are done by the Forwarder in their ERP-system	Delivery-Instruction	Loading-Instruction
Terminal Operator	Forwarder	Loading confirmation The <i>terminal operator</i> confirms which	Delivery-Message	Loaded-Specification

Sender of the message	Receiver of the message	Process Step	Message	Type
		products have been loaded on which goods carrier Trigger Loading finished		
Forwarder	Terminal Operator	Loaded goods carrier The <i>forwarder</i> informs the terminal operator about details on the goods carrier (eg. ID, weight, dimensions) Trigger Goods carrier have been loaded	Delivery-Message	ShipmentAdvice
Forwarder	Seller/Supplier	Loaded goods carrier The <i>forwarder</i> informs the seller/supplier about details on the goods carrier (eg. ID, weight, dimensions) Trigger Goods carrier have been loaded	Delivery-Message	ShipmentAdvice
Products are sent from the port of departure to the port of destination				
Forwarder (Departure)	Forwarder (Destination)	ShipmentAdvice The <i>forwarder at departure</i> informs the <i>forwarder at the destination port</i> about product details on the vessel per seller/supplier. Trigger Vessel has left the port of departure	Delivery-Message	ShipmentAdvice
Forwarder (Departure)	Seller/Supplier	ShipmentAdvice The <i>forwarder at departure</i> informs the <i>seller/supplier</i> about product details on the vessel Trigger Vessel has left the port of departure	Delivery-Message	ShipmentAdvice
Seller/Supplier	Buyer/ShipTo	ShipmentAdvice <i>Buyer/ShipTo</i> receives specification of the delivered products. The specification includes the detailed package information. This can be one or many documents/messages depending on the number of shipments. Trigger Vessel leaves the port of departure	DeliveryMessage	ShipmentAdvice
Forwarder (Destination)	Seller/Supplier	GoodsReceipt The <i>forwarder at destination</i> informs the <i>seller/supplier</i> about product details which have been unloaded Trigger Vessel has been unloaded at the port of destination	GoodsReceipt	
Seller/Supplier	Buyer/ShipTo	DeliveryMessage <i>Buyer/ShipTo</i> receives specification of the delivered products. The specification includes the detailed package information. This can be one or many documents/messages depending on the number of deliveries. Trigger Vessel has been unloaded at the port of destination	DeliveryMessage	DeliveryMessage
Forwarder	Seller/Supplier	Invoice of logistic services	Invoice	Invoice

Sender of the message	Receiver of the message	Process Step	Message	Type
(Departure)		The <i>forwarder at departure</i> is invoicing the logistic services to the <i>seller/supplier</i> . Trigger According to an agreement between the parties.		
Shipment Status				
<i>Sender</i>	<i>Receiver</i>	ShipmentStatus (optional) <i>Sender notifies receiver of a shipment event; such as:</i> <ul style="list-style-type: none"> • <i>Arrival at port</i> • <i>Shipment completed</i> • <i>Loaded / unloaded</i> • <i>Delay</i> • ... Trigger <i>An event occurs</i>	<i>ShipmentStatus</i>	



Transportation 2 nd leg post carriage with call-offs				
Buyer/ShipTo	Seller/Supplier	Call-Off The <i>buyer/shipto</i> requests quantity of products to be delivered. Trigger Production planning at buyer	CallOff	CallOff
Seller/Supplier	Buyer/ShipTo	Call-Off Confirmation The <i>seller/buyer confirms the</i> quantity of products to be delivered. Trigger Call off received	CallOff	CallOff Confirmation
Seller/Supplier	Forwarder (Destination)	Delivery instruction The <i>seller/supplier</i> sends the delivery instruction specifying the planned deliveries Trigger Delivery planning in the ERP-system	Delivery-Instruction	Delivery-Instruction
Booking of transport				
Forwarder (Destination)	Carrier (Destination)	Booking The forwarder at destination is booking a delivery for the volume in the “CallOff Confirmation” with the <i>carrier</i> . The delivery can be carried out by one or more trucks. Trigger Delivery instruction is received	LoadTender	Booking
Carrier (Destination)	Forwarder (Destination)	Booking confirmation The <i>carrier</i> is confirming the arrangement of the carriage of products. Trigger All arrangements are done by the <i>carrier</i> in their ERP-system	LoadTender-Response	Booking-Confirmation
Forwarder (Destination)	Terminal Operator (Destination)	Loading instructions The <i>forwarder</i> converts the delivery instructions to loading instructions for the terminal operator Trigger All arrangements are done by the Forwarder in their ERP-system	Delivery-Instruction	Loading-Instruction
Terminal Operator (Destination)	Forwarder (Destination)	Loading confirmation The <i>terminal operator</i> confirms which products have been loaded on which goods carrier Trigger Loading finished	Delivery-Message	Loaded-Specification
Products are sent from the terminal operator to the buyer/shipto				
Forwarder (Destination)	Carrier (Destination)	Waybill For each shipment a waybill is sent to the <i>carrier</i> . Trigger Truck leaves the warehouse with one shipment	DeliveryMessage	Waybill
Documents to the buyer				
Forwarder (Destination)	Seller/Supplier	DeliveryMessage The <i>forwarder at destination</i> informs the <i>seller/supplier</i> about product details on the transport	Delivery-Message	Delivery-Message

2011-02-23

		Trigger Truck has left the warehouse		
Seller/Supplier	Buyer/ShipTo	Delivery-Message <i>Buyer/ShipTo</i> receives specification of the delivered products. The specification includes the detailed package information. This can be one or many documents/messages depending on the number of deliveries. Trigger Truck has left the warehouse	Delivery-Message	Delivery-Message
Buyer/ShipTo	Seller/Supplier	GoodsReceipt (optional) The buyer/shipto informs the <i>seller/supplier</i> about product details which have been received Trigger Truck has been unloaded at shipto warehouse	GoodsReceipt	
Forwarder (Destination)/ Carrier (Destination)	Seller/Supplier	Invoice of logistic services The <i>forwarder/carrier</i> is invoicing the logistic services to the <i>seller/supplier</i> . Trigger According to an agreement between the parties.	Invoice	Invoice
Business acknowledgement (Hand shake function)				
Sender	Receiver	Business acknowledgement (optional) <i>Receiver</i> confirms that that they have processed a message	Business-Acknowledgement	
Shipment Status				
<i>Sender</i>	<i>Receiver</i>	ShipmentStatus (optional) <i>Sender</i> notifies <i>receiver</i> of a shipment event; such as: <ul style="list-style-type: none"> • <i>Arrival at port</i> • <i>Shipment completed</i> • <i>Loaded / unloaded</i> • <i>Delay</i> • ... Trigger <i>An event occurs</i>	ShipmentStatus	