



# papiNet

**Global Transaction Standards  
for the Paper Supply Chain**

**DeliveryMessageBook Documentation**

**Papinet Standard - Version 2.10**

**April 2003**

# DeliveryMessageBook Documentation - papiNet Standard - Version 2.10

---

## Copyright

Copyright 2000 – 2002 papiNet G.I.E (“papiNet”), International Digital Enterprise Alliance, Inc. (“IDEAlliance”), and American Forest & Paper Association, Inc. (“AF&PA”), collectively “Copyright Owner”. All rights reserved by the Copyright Owner under the laws of the United States, Belgium, the European Economic Community, and all states, domestic and foreign. This document may be downloaded and copied provided that all copies retain and display the copyright and any other proprietary notices contained in this document. This document may not be sold, modified, edited, or taken out of context such that it creates a false or misleading statement or impression as to the purpose or use of the papiNet specification, which is an open standard. Use of this Standard, in accord with the foregoing limited permission, shall not create for the user any rights in or to the copyright, which rights are exclusively reserved to the Copyright Owner.

papiNet (formerly known as the European Paper Consortium for e-business - EPC), IDEAlliance (formerly known as the Graphic Communications Association - GCA), the parent organisation of IDEAlliance the Printing Industries of America (PIA), the American Forest and Paper Association (AF&PA), and the members of the papiNet Working Group (collectively and individually, "Presenters") make no representations or warranties, express or implied, including, but not limited to, warranties of merchantability, fitness for a particular purpose, title, or non-infringement. The presenters do not make any representation or warranty that the contents of this document are free from error, suitable for any purpose of any user, or that implementation of such contents will not infringe any third party patents, copyrights, trademarks or other rights. By making use of this document, the user assumes all risks and waives all claims against Presenters.

In no event shall Presenters be liable to user (or other person) for direct, indirect, special or consequential damages arising from or related to any use of this document, including, without limitation, lost profits, business interruption, loss of programs, or other data on your information handling system even if Presenters are expressly advised of the possibility of such damages.

---

## Use of Documents in papiNet Implementations

Documents may be used as templates for a papiNet implementation. The Presenters grant the right to modify and edit them to fit an actual implementation project provided all copies display the copyright and any other proprietary notices contained in this document. Such modified documents must not be distributed beyond the trading partners implementing or maintaining a papiNet connection.

---

## Additional Copyright Information

Additional copyrights may be referenced throughout this document in the appropriate section.

# DeliveryMessageBook Documentation - papiNet Standard - Version 2.10

---

## Table of Contents

---

<b>Copyright .....</b>	<b>2</b>
Use of Documents in papiNet Implementations .....	2
Additional Copyright Information .....	2
<b>Message Documentation .....</b>	<b>4</b>
The Delivery Message .....	4
Introduction.....	4
An Overview of the Delivery Message .....	4
The Scope of the Delivery Message .....	4
Delivery Message Types .....	5
Delivery Business Rules.....	5
Processing the Delivery Message .....	6
High-level UML Diagram of DeliveryMessage.....	8
Overview of Delivery Schema Structure .....	9
Graphical Representation of the DeliveryMessageBook .....	10
Delivery Message – Structure and Processing Logic .....	11
Business Scenarios .....	17
Appendix A – DeliveryMessage Sample, DeliveryMessage Type .....	22
Appendix B – DeliveryMessage, InitialShipmentAdvice Type.....	27
Appendix C – DeliveryMessage, Financial Analysis .....	33

# DeliveryMessageBook Documentation - papiNet Standard - Version 2.10

---

## Message Documentation

---

### The Delivery Message

#### Introduction

This document is designed for use within the Book Manufacturing Industry, consisting of publishers, printers, and component suppliers. It is based upon the standard papiNet Delivery Message, but customized to fit the Book Manufacturing Industry. It will be useful to become acquainted with certain papiNet documents such as the Data Dictionary and the Business Process. These can be found at the papiNet site, <http://www.papinet.org>.

#### An Overview of the Delivery Message

This message specifies the details of a shipment that is either being despatched or will be despatched at a later time. A seller sends a delivery message to one or more receivers, including the ship-to and/or buyer parties. A delivery message fulfils the same or similar role as a delivery note, manifest, weight list, tally sheet, advanced shipping notice, or packing list.

The seller should send the delivery message in sufficient time so the recipient can process the information before the goods arrive. The recipient can then prepare efficiently for the reception of the goods. A delivery message can trigger either an invoice or a direct payment.

There are two types of delivery message. The first, the initial shipment advice, is used to provide general information of a planned or actual shipment and can be used as an advanced notice of delivery. The second, the delivery message, is used to communicate to trading partners that a shipment has occurred with details of the items shipped and tracking information.

#### The Scope of the Delivery Message

The delivery message can include:

- The date on which goods were despatched or will be ready for despatch to a single ship-to party.
- Consignment details such as purchase order, reel identifiers, and weights.
- Tracking details (such as the route of delivery).

Using this information, the buyer can:

- Begin the customs clearance process, for international shipments.
- Prepare for receipt of goods.
- Reconcile the physically delivered goods with those reported.
- Reconcile the list of delivered goods with the invoice for those goods.

A delivery message cannot be used to return goods to the seller.

# DeliveryMessageBook Documentation

## papiNet Standard - Version 2.10

---

### Delivery Message Types

There are two types of delivery message:

- Initial shipment advice
  - ✧ Issued by seller to inform the buyer and/or consignee that the order is ready for despatch or delivery (such as to a warehouse)
  - ✧ May precede a delivery message to inform the ship-to party or other interested parties that a shipment will be made
  - ✧ Provides planned shipment and routing information to the ship-to party or other interested parties
  - ✧ Does not necessarily include delivery item details, such as reel identifiers
- Delivery message
  - ✧ The most commonly used type
  - ✧ Used when goods are being shipped to a final destination
  - ✧ Describes the contents and configuration of a shipment at various levels of detail
  - ✧ Includes complete delivery line item details, such as reel identifiers and weights
  - ✧ The details provided on the delivery message may differ from those provided in the initial shipment advice

### Delivery Business Rules

The following table lists the business rules that apply to both delivery message types.

#### General Business Rules for DeliveryMessage

Reference	Rule
DEL001	There are two types of delivery messages: DeliveryMessage and InitialShipmentAdvice.
DEL002	A DeliveryMessage can have only one ShipToParty.
DEL003	One or more DeliveryLeg(s) specify the delivery route.
DEL004	Each DeliveryLeg may include transport information that details the mode, vehicle, unit, and loading information.
DEL005	A DeliveryMessage contains a reference to one or more PurchaseOrder(s) and one or more PurchaseOrderLineItem(s) of those PurchaseOrder(s).
DEL006	A DeliveryMessage contains one or more DeliveryMessageLineItem(s) ordered by DeliveryMessageLineItemNumber.

## DeliveryMessageBook Documentation papiNet Standard - Version 2.10

Reference	Rule
DEL007	Each DeliveryMessageLineItem refers to only one PurchaseOrderLineItem from one PurchaseOrder.
DEL008	In the case of a mixed pallet with multiple products from different PurchaseOrderLineItem(s), the same pallet identifier can be included in multiple DeliveryMessageLineItem(s).
DEL009	Each DeliveryMessageLineItem can contain one or more PackageInformation elements.
DEL010	PackageInformation enumerates delivered physical items.
DEL011	See following tables for different message types.
DEL012	PackageInformation is a hierarchy that represents package details for example, box, pallet, reels, or sheets. Each level has an identifier field used to specify the pallet, box, multi-reel, ream, or reel identifier according to defined numbering schemes.
DEL013	Delivery messages must be processed in ascending date time order using DeliveryMessageDate to ensure the correct processing of replacements and/or cancellations.
DEL014	If the seller sets the DeliveryMessageStatusType attribute to "Replaced" or "Cancelled", the OriginalDeliveryNumber must be present in DeliveryMessageReference.

### Business Rules for DeliveryMessage DeliveryMessageType

Reference	Rule
DEL011a	PackageInformation is required for a DeliveryMessage.

### Business Rules for InitialShipmentAdvice DeliveryMessageType

Reference	Rule
DEL011b	PackageInformation is optional for an InitialShipmentAdvice.

## Processing the Delivery Message

Message processing depends on the message type and on the value in the status field at the message header level. Both DeliveryMessage and InitialShipmentAdvice have only one status field—DeliveryMessageStatusType at the message level. For the delivery message, both message types are processed in the same way.

The seller or a representative of the seller is the only party that sends a delivery message. The message can be sent with one of three values in the DeliveryMessageStatusType field.

## DeliveryMessageBook Documentation papiNet Standard - Version 2.10

---

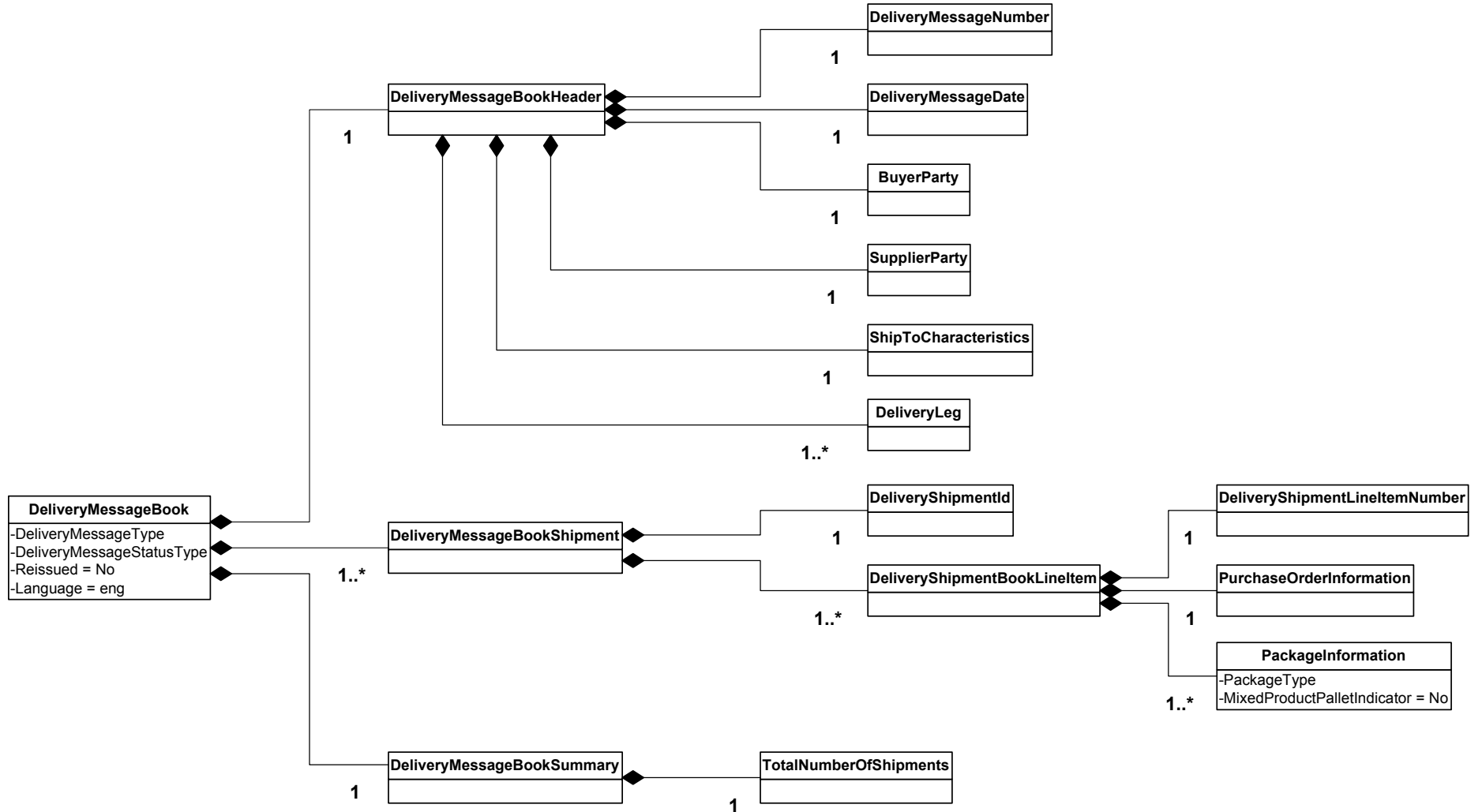
### Status Values Used When Processing the Delivery Message

Level	Attribute	Value
Message	DeliveryMessage- StatusType	<p><b>Original</b> – Indicates that this is the first transmission of the message.</p> <p><b>Cancelled</b> – Indicates that the seller wants to cancel the message.</p> <ul style="list-style-type: none"> <li>✧ Per business rule DEL014, the seller must reference the OriginalDeliveryNumber of the original message if the delivery message’s DeliveryMessage-StatusType is set to Cancelled.</li> </ul> <p><b>Replaced</b> – Indicates that the seller wants to replace the message.</p> <ul style="list-style-type: none"> <li>✧ Per business rule DEL014, the seller must reference the OriginalDeliveryNumber of the original message if the delivery message’s DeliveryMessage-StatusType is set to Replaced.</li> </ul>

# DeliveryMessageBook Documentation

## papiNet Standard - Version 2.10

### High-level UML Diagram of DeliveryMessage



# DeliveryMessageBook Documentation

## papiNet Standard - Version 2.10

---

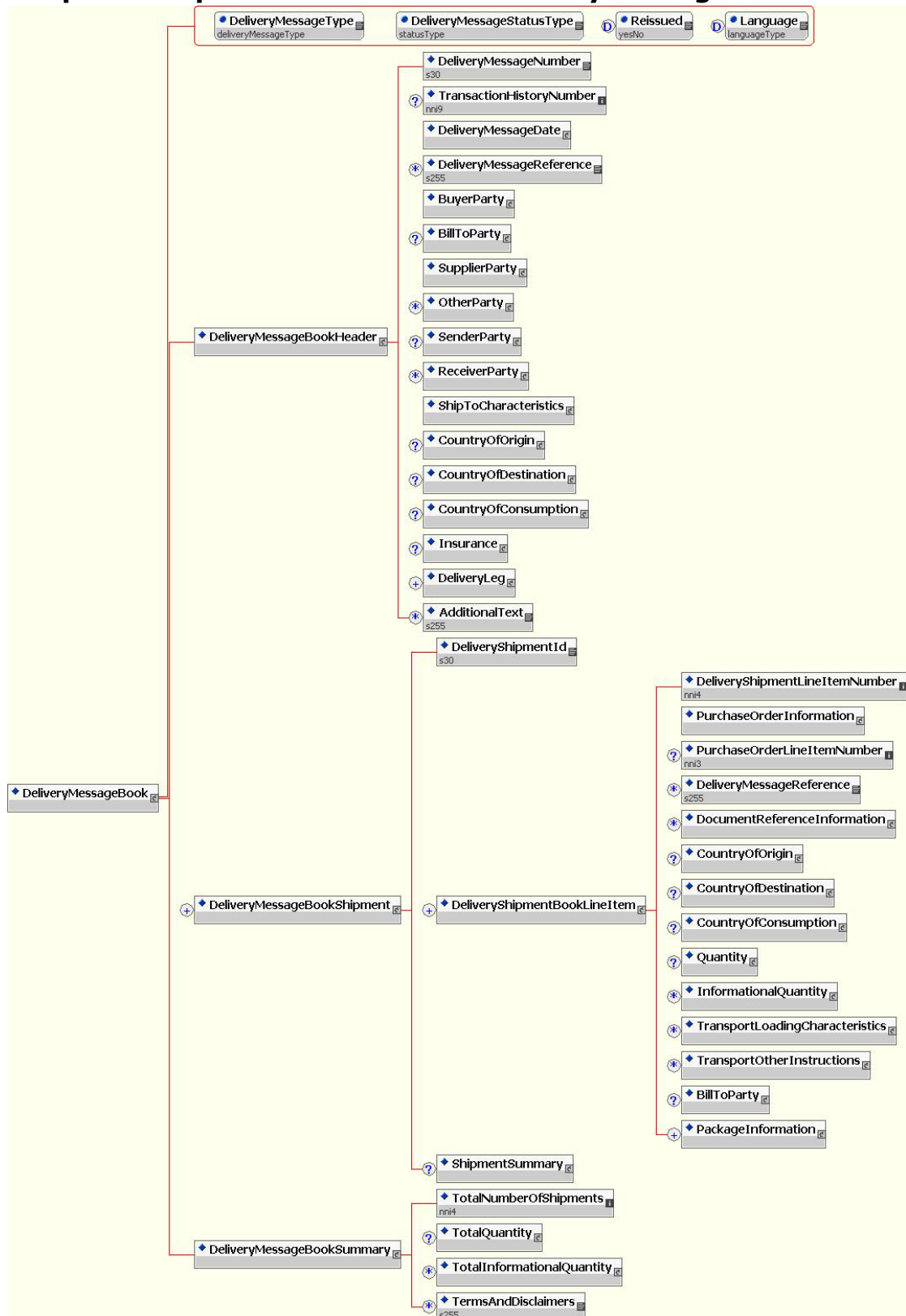
### Overview of Delivery Schema Structure

	Type	Required	Occurrence
DeliveryMessageBook	Root	<b>Required</b>	Single
@DeliveryMessageType	Attribute	<b>Required</b>	Single
@DeliveryMessageStatusType	Attribute	<b>Required</b>	Single
@Reissued	Attribute	Optional	Single
@Language	Attribute	Optional	Single
DeliveryMessageBookHeader		<b>Required</b>	Single
DeliveryMessageNumber	Element	<b>Required</b>	Single
TransactionHistoryNumber	Element	Optional	Single
DeliveryMessageDate	Element	<b>Required</b>	Single
DeliveryMessageReference	Element	Optional	Multiple
BuyerParty	Element	<b>Required</b>	Single
BillToParty	Element	Optional	Single
SupplierParty	Element	<b>Required</b>	Single
OtherParty	Element	Optional	Multiple
SenderParty	Element	Optional	Single
ReceiverParty	Element	Optional	Multiple
ShipToCharacteristics	Element	<b>Required</b>	Single
CountryOfOrigin	Element	Optional	Single
CountryOfDestination	Element	Optional	Single
CountryOfConsumption	Element	Optional	Single
Insurance	Element	Optional	Single
DeliveryLeg	Element	<b>Required</b>	Multiple
AdditionalText	Element	Optional	Multiple
DeliveryMessageBookShipment		<b>Required</b>	Multiple
DeliveryShipmentId	Element	<b>Required</b>	Single
DeliveryShipmentBookLineItem	Element	<b>Required</b>	Multiple
ShipmentSummary	Element	Optional	Single
DeliveryMessageSummary		<b>Required</b>	Single
TotalNumberOfShipments	Element	<b>Required</b>	Single
TotalQuantity	Element	Optional	Single
TotalInformationalQuantity	Element	Optional	Multiple
TermsAndDisclaimers	Element	Optional	Multiple

# DeliveryMessageBook Documentation

## papiNet Standard - Version 2.10

### Graphical Representation of the DeliveryMessageBook



# DeliveryMessageBook Documentation

## papiNet Standard - Version 2.10

---

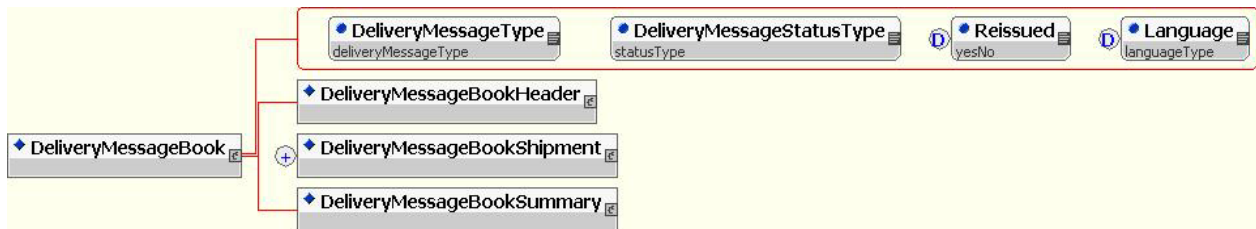
### Delivery Message – Structure and Processing Logic

This section provides a detailed graphical view of the DTD structure. It also contains a review of the processing logic that is special to the Delivery message and links to the common element and attributes glossary entries.

The graphical display of the DTD contains occurrence indicators that are XML standards. These indicators appear to the left of element boxes in DTD graphics, and they have the following meanings:

- (Blank) Required, single instance
- (+) Required, multiple instances
- (?) Optional, single instance
- (\*) Optional, multiple instances

### DeliveryMessageBook Root



The DeliveryMessageBook contains:

- DeliveryMessageBookHeader
- DeliveryMessageBookShipment
- DeliveryMessageBookSummary

Two attributes determine the type and the status of the DeliveryMessageBook:

- DeliveryMessageType
  - ✧ InitialShipmentAdvice
  - ✧ DeliveryMessage
- DeliveryMessageStatusType
  - ✧ Original
  - ✧ Replaced
  - ✧ Cancelled

DeliveryMessage has a required attribute that indicates whether the document is an original or a copy. When this attribute is omitted the document is not a copy – it is an original.

- Reissued
  - ✧ Yes
  - ✧ No

# DeliveryMessageBook Documentation

## papiNet Standard - Version 2.10

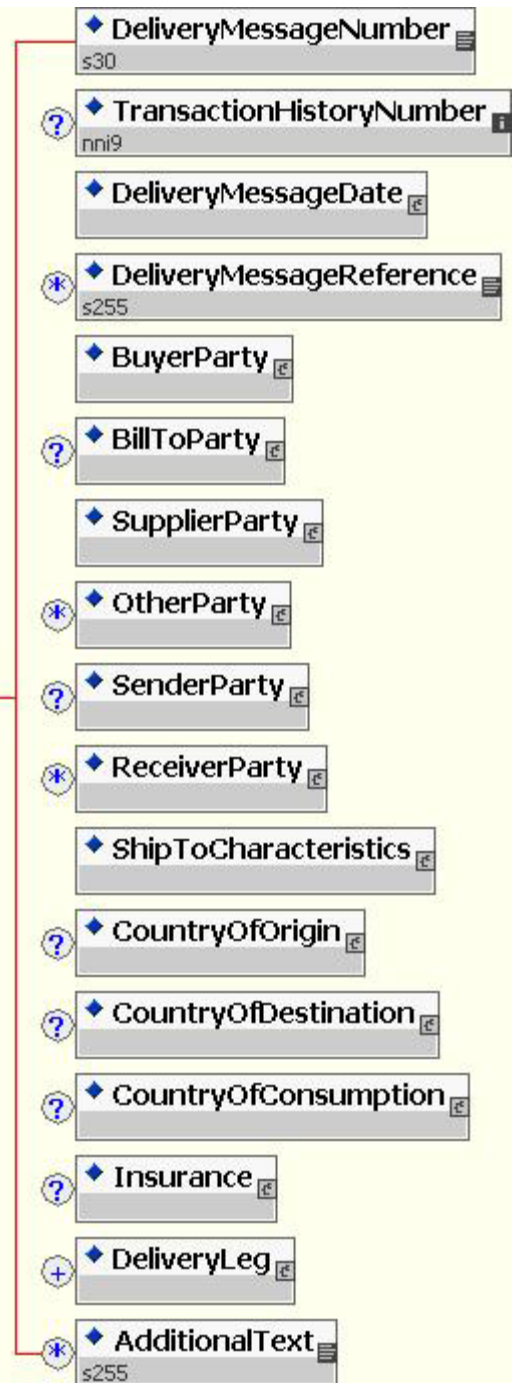
### DeliveryMessageBookHeader

The DeliveryMessageBookHeader is required and contains information common to the entire delivery:

- DeliveryMessageNumber
- TransactionHistoryNumber
- DeliveryMessageDate
- DeliveryMessageReference
  - ✦ The attribute ReferenceType is required.
- BuyerParty
- BillToParty
- SupplierParty
- OtherParty
- SenderParty
- ReceiverParty
- ShipToCharacteristics



- CountryOfOrigin
- CountryOfDestination
- CountryOfConsumption
- Insurance
- DeliveryLeg
- AdditionalText



# DeliveryMessageBook Documentation

## papiNet Standard - Version 2.10

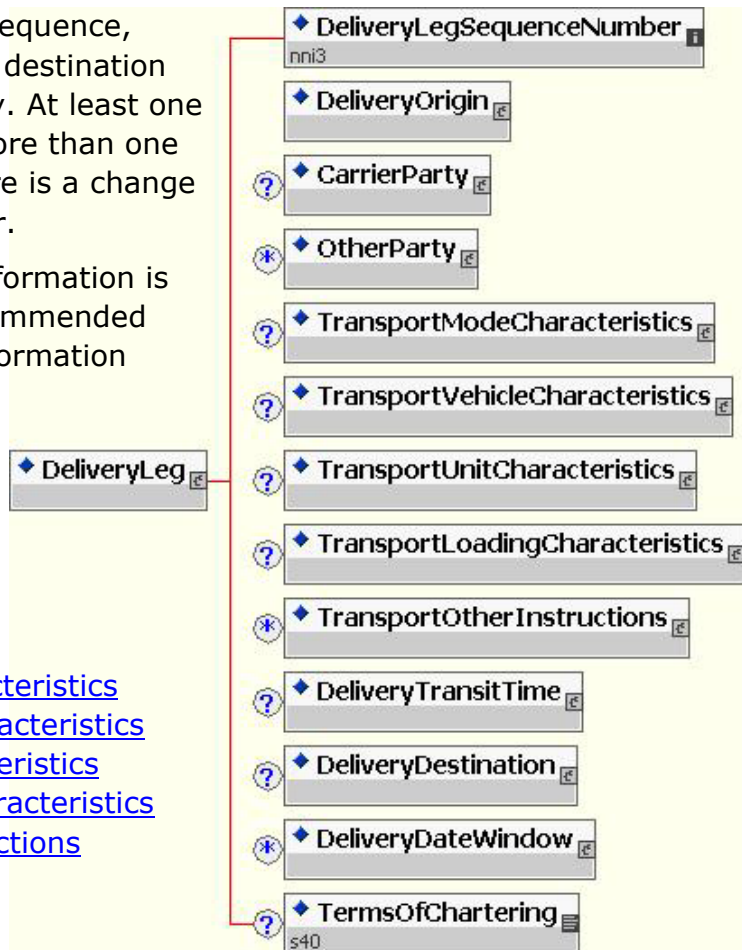
### DeliveryLeg

A DeliveryLeg details the sequence, origin, transportation, and destination of each part of the delivery. At least one DeliveryLeg is required. More than one leg may be required if there is a change of mode, vehicle, or carrier.

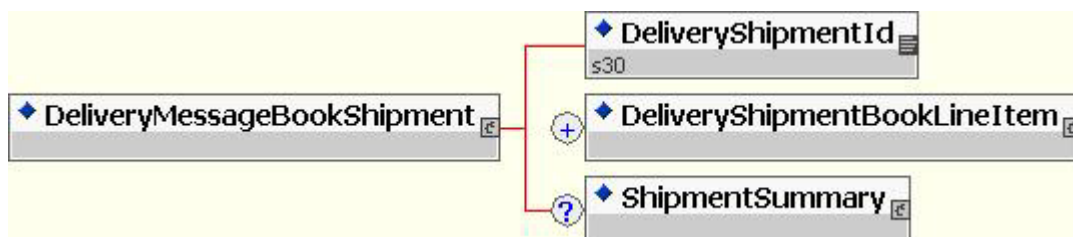
Although transportation information is optional, it is strongly recommended that any transportation information available be sent.

DeliveryLeg contains:

- [DeliveryLeg-SequenceNumber](#)
- [DeliveryOrigin](#)
- [CarrierParty](#)
- [OtherParty](#)
- [TransportModeCharacteristics](#)
- [TransportVehicleCharacteristics](#)
- [TransportUnitCharacteristics](#)
- [TransportLoadingCharacteristics](#)
- [TransportOtherInstructions](#)
- [DeliveryTransitTime](#)
- [DeliveryDestination](#)
- [DeliveryDateWindow](#)
- [TermsOfChartering](#)



### DeliveryMessageBookShipment



DeliveryMessageBookShipment is required. The DeliveryMessageBookShipment specifies an individual shipment. It may contain many shipment line items. for. It contains these elements:

- DeliveryShipmentId
- DeliveryShipmentBookLineItem
- ShipmentSummary

# DeliveryMessageBook Documentation

## papiNet Standard - Version 2.10

### DeliveryShipmentBookLineItem

DeliveryShipmentBookLineItem is required. The DeliveryShipmentBookLineItem specifies an individual shipment delivery line for one purchase order and purchase order line item. It contains these elements:

- DeliveryShipment-LineItemNumber
- PurchaseOrderInformation
- PurchaseOrderLineItem-Number
- DeliveryMessageReference

#### DeliveryShipmentBookLineItem

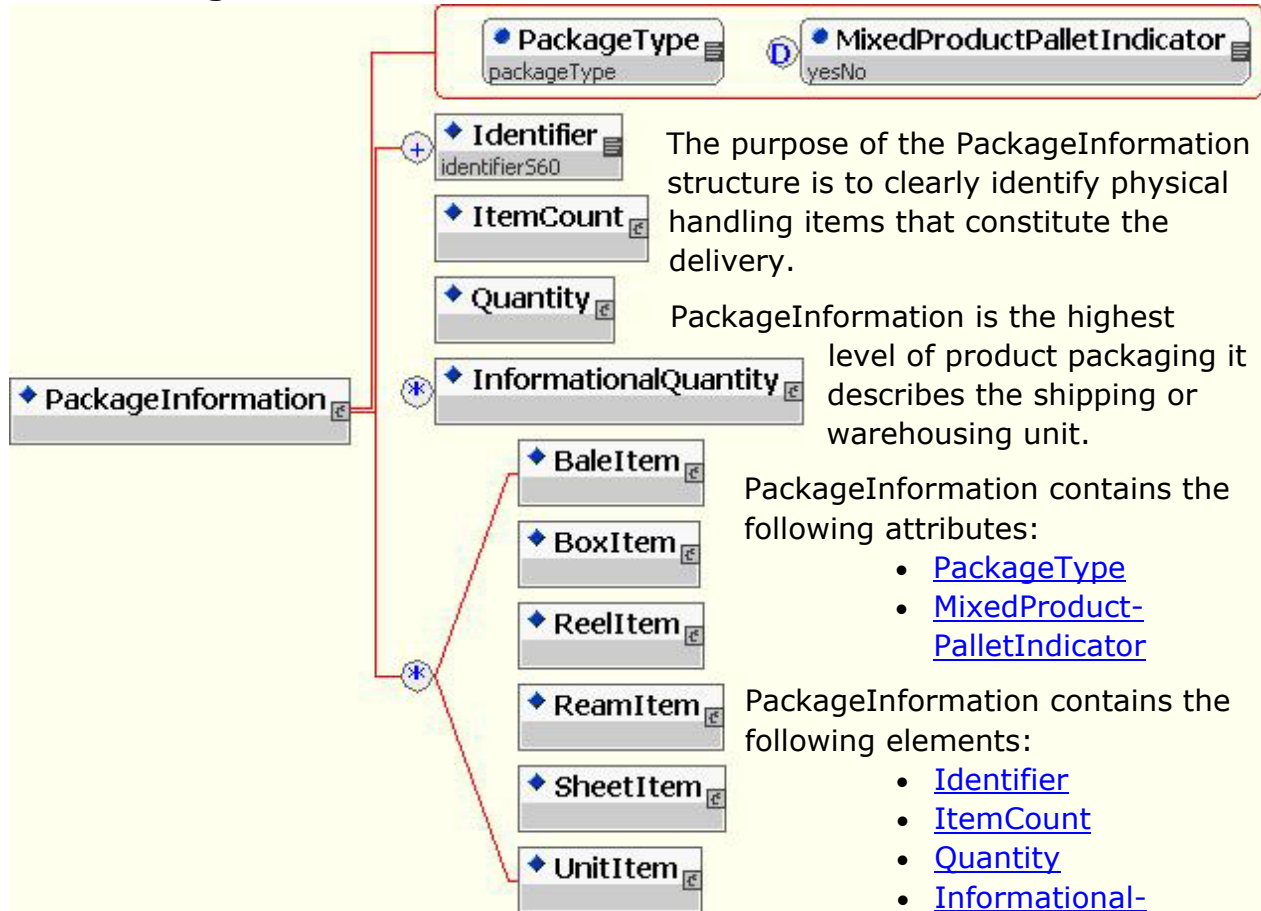
- DocumentReference-Information
- CountryOfOrigin
- CountryOfDestination
- CountryOfConsumption
- Quantity of the entire DeliveryMessageLineItem
- InformationalQuantity
- TransportLoading-Characteristics
- TransportOtherInstructions
- BillToParty
- PackageInformation



# DeliveryMessageBook Documentation

## papiNet Standard - Version 2.10

### PackageInformation



- [Quantity](#)
- [BaleItem](#)
- [BoxItem](#)
- [ReelItem](#)
- [ReamItem](#)
- [SheetItem](#)
- [UnitItem](#)

Each package, or handling unit, may be composed of further packages or items, for example, Pallets are composed of Boxes. This relationship is supported by the PackageInformation structure.

Note that use of further levels in the PackageInformation structure, that is Box, etc., is only required if:

- the components of the package themselves carry identifiers and this information is required for updating inventory systems
- detailed characteristics of the item may also be sent in the message

# DeliveryMessageBook Documentation

## papiNet Standard - Version 2.10

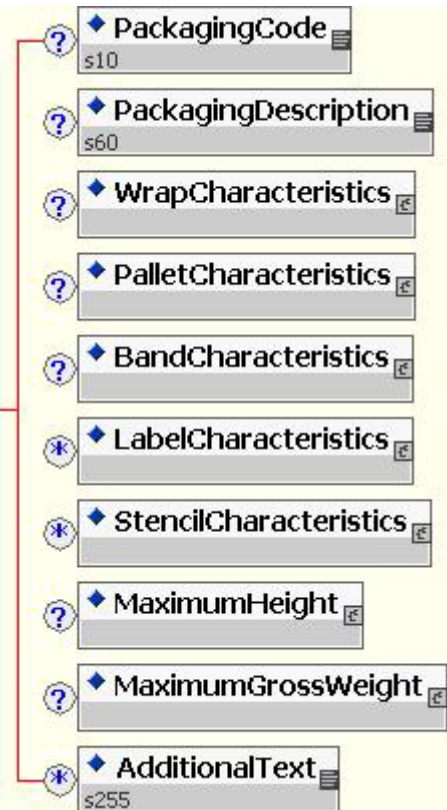
### PalletPackagingCharacteristics

PalletPackagingCharacteristics details the characteristics of the packaging for a pallet. It contains the following elements:

- PackagingCode
- PackagingDescription
- WrapCharacteristics
- PalletCharacteristics
- BandCharacteristics
- LabelCharacteristics



- StencilCharacteristics
- MaximumHeight
- MaximumGrossWeight
- AdditionalText



### DeliveryMessageBookSummary

DeliveryMessageBookSummary is a required element.

DeliveryMessageBookSummary contains the following elements:



- TotalNumberOfShipments
- TotalQuantity
- TotalInformationalQuantity
- [TermsAndDisclaimers](#) that includes any legal qualifications on his delivery



# DeliveryMessageBook Documentation

## papiNet Standard - Version 2.10

---

### Business Scenarios

<a href="#"><u>Scenario A</u></a>	Printing and Binding Supplier ships finished product to Buyer's warehouse and a drop shipment location. A DeliveryMessage is sent to the Buyer that specifies books packed in boxes on pallets and shipped.
<a href="#"><u>Scenario B</u></a>	Component vendor sends a DeliveryMessage message for covers to Printing and Binding Supplier with a copy to the buyer that specifies covers packed on pallets
<a href="#"><u>Scenario C</u></a>	A Purchase Order message was sent to a supplier with incomplete ShipTo Information (the supplier is instructed to request ShipTo Information when the product is ready to be shipped). The supplier sends an Initial Shipment Advice version of the DeliveryMessage to the buyer requesting Shipping Instructions. This message contains goods packing counts and related information. The buyer responds by sending one or more CallOff message to the supplier. When the finished goods are actually sent, the supplier sends a DeliveryMessage to the buyer confirming shipment(s).
<a href="#"><u>Scenario D</u></a>	A DeliveryMessage is sent that corrects an erroneous DeliveryMessage.

# DeliveryMessageBook Documentation

## papiNet Standard - Version 2.10

### Scenario A

<b>Message</b>	Delivery Message
<b>Type</b>	"DeliveryMessage"
<b>Business Scenario</b>	<p>A DeliveryMessage is sent to the Buyer that specifies books packed in boxes on pallets.</p> <pre> sequenceDiagram     participant S as Printing and Binding : SupplierParty     participant B as Publisher : BuyerParty     participant W as Warehouse : ReceiverParty     S-&gt;&gt;B: Receive DeliveryMessage()     B--&gt;&gt;S: BusinessAcknowledgement     B-&gt;&gt;W: Receive DeliveryMessage()     W--&gt;&gt;B: BusinessAcknowledgement     </pre>
<b>Outcome</b>	Delivery is recorded as shipped in the Buyer's system
<b>Initiator</b>	Printing and Binding Supplier
<b>Receiver</b>	<ul style="list-style-type: none"> <li>• Buyer</li> <li>• Warehouse</li> </ul>
<b>Trigger</b>	Goods are ready for Delivery
<b>Step 1</b>	<p>Supplier sends a Delivery Message for the books that are being shipped. Each PackageInformation specifies the Pallets that are sent and the Boxes and Units that are contained on each Pallet.</p> <ul style="list-style-type: none"> <li>• Pallet is the highest packing level in the Use Case so the PackageInformation/PackageType is "Pallet". PackageInformation can occur multiple times.</li> <li>• The MixedProductPalletIndicator on Pallet is set to "No" because only one product (ISBN) is on each Pallet</li> <li>• Identifier is the Identifier used to distinguish the Pallet</li> <li>• ItemCount is the count of the number of Boxes on this Pallet</li> <li>• Quantity contains the Units which is the total number of books on the Pallets.</li> <li>• InformationalQuantity is the full weight of the Pallet, Boxes, and Books.</li> </ul>
	<p>Statuses sent within the message:</p> <ul style="list-style-type: none"> <li>• DeliveryMessageStatusType = "Original"</li> </ul>

# DeliveryMessageBook Documentation

## papiNet Standard - Version 2.10

### Scenario B

<b>Message</b>	Delivery Message
<b>Type</b>	"DeliveryMessage"
<b>Business Scenario</b>	<p>Component Vendor sends a DeliveryMessage message for covers to Printing and Binding Supplier with a copy to the Buyer that specifies covers packed on pallets</p> <pre> sequenceDiagram     participant CS as Component Supplier : SupplierParty     participant P as Publisher : BuyerParty     participant PBS as Printing and Binding Supplier : ReceiverParty      CS-&gt;&gt;P: Receive DeliveryMessage()     activate P     P--&gt;&gt;CS: BusinessAcknowledgement     deactivate P     CS-&gt;&gt;PBS: Receive DeliveryMessage()     activate PBS     PBS--&gt;&gt;CS: BusinessAcknowledgement     deactivate PBS     </pre>
<b>Outcome</b>	Delivery is recorded as shipped in the Buyer's system
<b>Initiator</b>	Component Vendor
<b>Receiver</b>	<ul style="list-style-type: none"> <li>• Printing and Binding Supplier</li> <li>• Buyer/Publisher</li> </ul>
<b>Trigger</b>	Goods are ready for Delivery
<b>Step 1</b>	<p>Supplier sends a Delivery Message that corresponds to one PurchaseOrderInformation, PurchaseOrderLineItemNumber combination. Each PackageInformation occurrence specifies the Pallets that are sent and the Covers that are contained in each Pallet.</p> <ul style="list-style-type: none"> <li>• Pallet is the highest packing level in the Use Case so the initial PackageInformation@PackageType is "Pallet".</li> <li>• PackageInformation can occur multiple times.</li> <li>• Identifier is the Identifier used to distinguish the Pallet. ItemCount is the count of the number of Units packed in the Pallet.</li> <li>• Quantity contains the GrossWeight which is the full weight of the Pallet including packaging and Wrapping</li> <li>• Identifier is the Identifier used to distinguish the Reel</li> </ul>
	<p>Statuses sent within the message:</p> <ul style="list-style-type: none"> <li>• DeliveryMessageStatusType = "Original"</li> </ul>

# DeliveryMessageBook Documentation

## papiNet Standard - Version 2.10

### Scenario C

<b>Message</b>	Delivery Message
<b>Type</b>	"Initial Shipment Advice"
<b>Business Scenario</b>	<p>An Initial Shipment Advice version of the DeliveryMessage is sent to the buyer requesting Shipping Instructions.</p> <pre> sequenceDiagram     participant Supplier as Supplier : SupplierParty     participant Buyer as Buyer : BuyerParty     Supplier-&gt;&gt;Buyer: Receive DeliveryMessage()     Buyer--&gt;&gt;Supplier: BusinessAcknowledgement     Buyer-&gt;&gt;Supplier: Receive ShippingInstructions()     Supplier--&gt;&gt;Buyer: BusinessAcknowledgement     </pre>
<b>Outcome</b>	<p>Books are recorded as ready to ship in the Buyer's system.</p> <p>Buyer's system sends ShippingInstructions message to supplier</p>
<b>Initiator</b>	Supplier
<b>Receiver</b>	Buyer
<b>Preconditions</b>	Goods are ready for Delivery
<b>Step 1</b>	Supplier sends a Delivery Message that corresponds to one or more products (Books) that are ready to ship. The message specifies the PackageType information (pallets, boxes) and the quantities and weights.
<b>Step 2</b>	The buyer sends ShippingInstructions to the supplier specifying transport information, ShipTo locations, and dates.
<b>Step 3</b>	Supplier sends a DeliveryMessage to the buyer that confirms the shipment has been made.
	<p>Statuses sent within the message:</p> <ul style="list-style-type: none"> <li>• DeliveryMessageStatusType = "Original"</li> </ul>

# DeliveryMessageBook Documentation

## papiNet Standard - Version 2.10

### Scenario D

<b>Message</b>	DeliveryMessage
<b>Type</b>	"DeliveryMessage"
<b>Business Scenario</b>	<p>A DeliveryMessage is sent that cancels an erroneous DeliveryMessage.</p> <pre> sequenceDiagram     participant S as : SupplierParty     participant B as : BuyerParty     S-&gt;&gt;B: BusinessAcknowledgement     B--&gt;&gt;S: Receive Cancelled DeliveryMessage()     S-&gt;&gt;B: BusinessAcknowledgement     </pre>
<b>Outcome</b>	The Cancelled Delivery Information is removed from the Buyer's systems.
<b>Initiator</b>	Supplier
<b>Receiver</b>	Buyer
<b>Preconditions</b>	Goods were ready for Delivery and an Original DeliveryMessage was sent. The Delivery is in error and should be cancelled.
<b>Step 1</b>	Supplier sends an "Original" Delivery Message that corresponds to one or more PurchaseOrderInformation, PurchaseOrderLineItemNumber combination and includes PackageInformation details.
<b>Step 2</b>	An error in the original DeliveryMessage is noted.
<b>Step 3</b>	<p>DeliveryMessageStatusType is set to "Cancelled". The new message contains no replacement information.</p> <ul style="list-style-type: none"> <li>In the DeliveryMessageReference, the ReferenceType attribute is set to "OriginalDeliveryNumber". The element contains that number.</li> </ul>

# DeliveryMessageBook Documentation

## papiNet Standard - Version 2.10

### Appendix A – DeliveryMessage Sample, DeliveryMessage Type

Element	Type	Required	Occurrence	Value/Notes
DeliveryMessage-Book	Root	Required	Single	
DeliveryMessageType	Attribute	Required	Single	DeliveryMessage
DeliveryMessageStatusType	Attribute	Required	Single	Original
Reissued	Attribute	Optional	Single	
Language	Attribute	Optional	Single	
DeliveryMessageHeader-Book	Group	Required	Single	
DeliveryMessageNumber	Element	Required	Single	QMISA072602A01
DeliveryMessageDate	Group	Required	Single	
Date	Group	Required	Single	
Year	Element	Required	Single	2002
Month	Element	Required	Single	07
Date	Element	Required	Single	29
Time	Element	Optional	Single	
DeliveryMessageReference	Element	Optional	Multiple	0060392452
DeliveryMessageReferenceType	Attribute	Optional	Single	CustomerReference Number
BuyerParty	Group	Required	Single	
PartyIdentifier	Element	Optional	Multiple	1234567
PartyIdentifierType	Attribute	Optional	Single	StandardAddress- Number
NameAddress	Group	Required	Single	
Name1	Element	Required	Single	Harper Collins Publishers
SupplierParty	Group	Required	Single	
PartyIdentifier	Element	Optional	Multiple	1796038
PartyIdentifierType	Attribute	Optional	Single	StandardAddressNu mber
NameAddress	Group	Required	Single	
Name1	Element	Required	Single	Quebecor Martinsburg
ShipToCharacteristics	Group	Required	Single	
ShipToParty	Group	Required	Single	
PartyIdentifier	Element	Optional	Multiple	12345670010
PartyIdentifierType	Attribute	Optional	Single	StandardAddressNu mber
NameAddress	Group	Required	Single	
Name1	Element	Required	Single	Harper Collins Warehouse
CountryOfOrigin	Element	Optional	Single	
CountryOfDestination	Element	Optional	Single	
CountryOfConsumption	Element	Optional	Single	
Insurance	Group	Optional	Single	
DeliveryLeg	Group	Required	Multiple	
DeliveryLegSequenceNumber	Element	Required	Single	001
DeliveryOrigin	Group	Optional	Single	
Date	Group	Required	Single	
Year	Element	Required	Single	2002

# DeliveryMessageBook Documentation

## papiNet Standard - Version 2.10

Element						Type	Required	Occurrence	Value/Notes
			Month			Element	Required	Single	07
			Date			Element	Required	Single	29
			Time			Element	Optional	Single	
			LocationParty			Element	Required	Single	
			PartyIdentifier			Element	Optional	Multiple	1796038
			PartyIdentifierType			Attribute	Optional	Single	StandardAddressNumber
			NameAddress			Group	Required	Single	
			Name1			Element	Required	Single	Quebecor - Martinsburg
			CarrierParty			Element	Optional	Single	
			PartyIdentifier			Element	Optional	Multiple	333477778
			PartyIdentifierType			Attribute	Optional	Single	DunsNumber
			NameAddress			Group	Required	Single	
			Name1			Element	Required	Single	Yellow Freight
			OtherParty			Element	Optional	Multiple	
			TransportModeCharacteristics			Group	Optional	Single	
			TransportModeType			Attribute	Required	Single	Road
			TransportVehicleCharacteristics			Group	Optional	Single	
			TransportVehicleType			Attribute	Required	Single	TruckTrailer
			TransportVehicleCode			Element	Optional	Single	
			TransportVehicleIdentifier			Element	Optional	Multiple	A345T785
			TransportVehicleIdentifierType			Attribute	Required	Single	LicensePlateNumber
			TransportVehicleText			Element	Optional	Single	Texas
			DeliveryDestination			Group	Optional	Single	
			LocationParty			Element	Required	Single	
			PartyIdentifier			Element	Optional	Multiple	12345670010
			PartyIdentifierType			Attribute	Optional	Single	StandardAddressNumber
			NameAddress			Group	Required	Single	
			Name1			Element	Required	Single	Harper Collins Warehouse
			DeliveryDateWindow			Group	Optional	Multiple	
			DeliveryDateType			Attribute	Required	Single	EstimatedTimeOfArrival
		1	DateTimeRange			Group	Optional	Single	
			DateTimeFrom			Group	Required	Single	
			Date			Group	Required	Single	
			Year			Element	Required	Single	2002
			Month			Element	Required	Single	07
			Date			Element	Required	Single	30
			Time			Element	Optional	Single	11:00
			DateTimeTo			Group	Required	Single	
			Date			Group	Required	Single	
			Year			Element	Required	Single	2002
			Month			Element	Required	Single	07
			Date			Element	Required	Single	30

## DeliveryMessageBook Documentation

### papiNet Standard - Version 2.10

Element	Type	Required	Occurrence	Value/Notes
Time	Element	Optional	Single	15:00
AdditionalText	Element	Optional	Multiple	
DeliveryMessageShipment	Group	<b>Required</b>	Multiple	
DeliveryShipmentId	Element	<b>Required</b>	Single	QM02262002AB01
DeliveryShipmentLineItem	Element	<b>Required</b>	Multiple	
DeliveryShipmentLineItemNumber	Element	<b>Required</b>	Single	001
PurchaseOrderInformation	Group	<b>Required</b>	Single	
PurchaseOrderNumber	Element	<b>Required</b>	Single	F056065
PurchaseOrderRelease-Number	Element	Optional	Single	
PurchaseOrderIssuedDate	Group	Optional	Single	
Year	Element	<b>Required</b>	Single	2002
Month	Element	<b>Required</b>	Single	07
Date	Element	<b>Required</b>	Single	19
PurchaseOrderReference	Element	Optional	Multiple	
PurchaseOrderReference-Type	Attribute	<b>Required</b>	Single	
PurchaseOrderLineItemNumber	Element	Optional	Single	
DeliveryMessageReference	Element	Optional	Multiple	0-06-039245-2
DeliveryMessageReference-Type	Attribute	<b>Required</b>	Single	CustomerReference Number
DocumentReferenceInformation	Group	Optional	Multiple	
DocumentReferenceID	Element	<b>Required</b>	Single	0-06-039245-2
DocumentReferenceIDType	Attribute	<b>Required</b>	Single	ISBN10Dash
Quantity	Group	Optional	Single	
QuantityInformation	Group	<b>Required</b>	Single	
QuantityType	Attribute	<b>Required</b>	Single	Count
QuantityTypeContext	Attribute	Optional	Single	
AdjustmentType	Attribute	Optional	Single	
Value	Element	<b>Required</b>	Single	30240
uOM	Attribute	<b>Required</b>	Single	Unit
InformationalQuantity	Group	Optional	Multiple	
PackageInformation	Group	<b>Required</b>	Multiple	
P1 PackageType	Attribute	<b>Required</b>	Single	Pallet
MixedProductPalletIndicator	Attribute	<b>Required</b>	Single	No
Identifier	Element	<b>Required</b>	Multiple	multiplepallets
IdentifierCodeType	Attribute	<b>Required</b>	Single	Supplier
IdentifierType	Attribute	<b>Required</b>	Single	Primary
ItemCount	Group	<b>Required</b>	Single	
Value	Element	<b>Required</b>	Single	14
uOM	Attribute	<b>Required</b>	Single	PalletUnit
Quantity	Group	<b>Required</b>	Single	
QuantityInformation	Group	<b>Required</b>	Single	
QuantityType	Attribute	<b>Required</b>	Single	Count
QuantityTypeContext	Attribute	Optional	Single	
AdjustmentType	Attribute	Optional	Single	

# DeliveryMessageBook Documentation

## papiNet Standard - Version 2.10

Element	Type	Required	Occurrence	Value/Notes
Value	Element	Required	Single	60
uOM	Attribute	Required	Single	Box
InformationalQuantity	Group	Optional	Multiple	Measurement construct
QuantityType	Attribute	Required	Single	GrossWeight
QuantityTypeContext	Attribute	Optional	Single	
AdjustmentType	Attribute	Optional	Single	
Value	Element	Required	Single	2700
uOM	Attribute	Required	Single	Pound
BoxItem	Element	Optional	Multiple	
ItemCount	Group	Optional	Single	
Value	Element	Required	Single	60
uOM	Attribute	Required	Single	Box
Quantity	Group	Required	Single	
QuantityInformation	Group	Required	Single	
QuantityType	Attribute	Required	Single	GrossWeight
QuantityTypeContext	Attribute	Optional	Single	
AdjustmentType	Attribute	Optional	Single	
Value	Element	Required	Single	45
uOM	Attribute	Required	Single	Pound
UnitItem	Group	Optional	Multiple	
Product	Group	Optional	Single	
ProductIdentifier	Group	Required	Multiple	0-06-039245-2
ProductIdentifier-Type	Element	Required	Single	CatalogueNumber
Agency	Attribute	Required	Single	Buyer
Quantity	Group	Required	Single	
QuantityInformation	Group	Required	Single	
QuantityType	Attribute	Required	Single	Count
QuantityType-Context	Attribute	Optional	Single	
AdjustmentType	Attribute	Optional	Single	
Value	Element	Required	Single	36
uOM	Attribute	Required	Single	Unit
ShipmentSummary	Group	Optional	Single	
TotalQuantity	Group	Optional	Single	
QuantityInformation	Group	Required	Single	
QuantityType	Attribute	Required	Single	Count
Value	Element	Required	Single	30240
uOM	Attribute	Required	Single	Unit
TotalInformationalQuantity	Group	Optional	Multiple	
DeliveryMessageSummary-Book	Group	Required	Single	
TotalNumberOfShipments	Element	Required	Single	1
TotalQuantity	Group	Optional	Single	
QuantityInformation	Group	Required	Single	

## DeliveryMessageBook Documentation papiNet Standard - Version 2.10

Element						Type	Required	Occurrence	Value/Notes
			QuantityType			Attribute	<b>Required</b>	Single	Count
			Value			Element	<b>Required</b>	Single	30240
			uOM			Attribute	<b>Required</b>	Single	Unit
		TotalInformationalQuantity				Group	Optional	Multiple	
		TermsAndDisclaimers				Element	Optional	Multiple	

## DeliveryMessageBook Documentation papiNet Standard - Version 2.10

### Appendix B – DeliveryMessage, InitialShipmentAdvice Type

Element	Type	Required	Occurrence	Value Notes
DeliveryMessage-Book	Root	<b>Required</b>	Single	
DeliveryMessageType	Attribute	<b>Required</b>	Single	InitialShipmentAdvice
DeliveryMessageStatusType	Attribute	<b>Required</b>	Single	Original
Reissued	Attribute	Optional	Single	
Language	Attribute	Optional	Single	
DeliveryMessageHeader-Book	Group	<b>Required</b>	Single	
DeliveryMessageNumber	Element	<b>Required</b>	Single	QMISA072602A01
TransactionHistoryNumber	Element	Optional	Single	
DeliveryMessageDate	Group	<b>Required</b>	Single	
Date	Group	<b>Required</b>	Single	
Year	Element	<b>Required</b>	Single	2002
Month	Element	<b>Required</b>	Single	07
Date	Element	<b>Required</b>	Single	26
Time	Element	Optional	Single	
DeliveryMessageReference	Element	Optional	Multiple	0060392452
DeliveryMessageReferenceType	Attribute	Optional	Single	CustomerReferenceNumber
BuyerParty	Group	<b>Required</b>	Single	
PartyIdentifier	Element	Optional	Multiple	1234567
PartyIdentifierType	Attribute	Optional	Single	StandardAddressNumber
NameAddress	Group	<b>Required</b>	Single	
Name1	Element	<b>Required</b>	Single	Harper Collins Publishers
SupplierParty	Group	<b>Required</b>	Single	
PartyIdentifier	Element	Optional	Multiple	1796038
PartyIdentifierType	Attribute	Optional	Single	StandardAddressNumber
NameAddress	Group	<b>Required</b>	Single	
Name1	Element	<b>Required</b>	Single	Quebecor - Martinsburg
ShipToCharacteristics	Group	<b>Required</b>	Single	
ShipToParty	Group	<b>Required</b>	Single	Party construct
PartyIdentifier	Element	Optional	Multiple	12345670010

## DeliveryMessageBook Documentation papiNet Standard - Version 2.10

Element				Type	Required	Occurrence	Value Notes
			PartyIdentifierType	Attribute	Optional	Single	StandardAddressNumber
			NameAddress	Group	<b>Required</b>	Single	
			Name1	Element	<b>Required</b>	Single	Harper Collins Warehouse
			TermsOfDelivery	Group	Optional	Single	
			CountryOfOrigin	Element	Optional	Single	
			CountryOfDestination	Element	Optional	Single	
			CountryOfConsumption	Element	Optional	Single	
			Insurance	Group	Optional	Single	
			DeliveryLeg	Group	<b>Required</b>	Multiple	
			DeliveryLegSequence-Number	Element	<b>Required</b>	Single	001
			DeliveryOrigin	Group	Optional	Single	
			Date	Group	<b>Required</b>	Single	
			Year	Element	<b>Required</b>	Single	2002
			Month	Element	<b>Required</b>	Single	07
			Date	Element	<b>Required</b>	Single	26
			Time	Element	Optional	Single	
			LocationParty	Element	<b>Required</b>	Single	
			PartyIdentifier	Element	Optional	Multiple	1796038
			PartyIdentifierType	Attribute	Optional	Single	StandardAddressNumber
			NameAddress	Group	<b>Required</b>	Single	
			Name1	Element	<b>Required</b>	Single	Quebecor - Martinsburg
			CarrierParty	Element	Optional	Single	
			OtherParty	Element	Optional	Multiple	
			TransportMode-Characteristics	Group	Optional	Single	
			TransportVehicle-Characteristics	Group	Optional	Single	
			TransportUnitCharacteristics	Group	Optional	Single	
			TransportLoading-Characteristics	Group	Optional	Single	
			TransportOtherInstructions	Group	Optional	Multiple	
			DeliveryTransitTime	Group	Optional	Single	
			DeliveryDestination	Group	Optional	Single	

## DeliveryMessageBook Documentation papiNet Standard - Version 2.10

Element				Type	Required	Occurrence	Value Notes
			Date	Group	Optional	Single	
			Time	Element	Optional	Single	
			LocationParty	Element	<b>Required</b>	Single	
			PartyIdentifier	Element	Optional	Multiple	12345670010
			PartyIdentifierType	Attribute	Optional	Single	StandardAddressNumber
			NameAddress	Group	<b>Required</b>	Single	
			Name1	Element	<b>Required</b>	Single	Harper Collins Warehouse
			LocationCode	Element	Optional	Single	
			DeliveryDateWindow	Group	Optional	Multiple	
			TermsOfChartering	Element	Optional	Single	
			AdditionalText	Element	Optional	Multiple	
			DeliveryMessageShipment	Group	<b>Required</b>	Multiple	
			DeliveryShipmentId	Element	<b>Required</b>	Single	QM02262002AB01
			DeliveryShipmentLineItem	Element	<b>Required</b>	Multiple	
			DeliveryShipmentLineItem-Number	Element	<b>Required</b>	Single	001
			PurchaseOrderInformation	Group	<b>Required</b>	Single	
			PurchaseOrderNumber	Element	<b>Required</b>	Single	F056065
			PurchaseOrderRelease-Number	Element	Optional	Single	
			PurchaseOrderIssued-Date	Group	Optional	Single	
			Year	Element	<b>Required</b>	Single	2002
			Month	Element	<b>Required</b>	Single	07
			Date	Element	<b>Required</b>	Single	19
			PurchaseOrderReference	Element	Optional	Multiple	
			PurchaseOrder-ReferenceType	Attribute	<b>Required</b>	Single	
			PurchaseOrderLineItem-Number	Element	Optional	Single	
			DeliveryMessageReference	Element	Optional	Multiple	0-06-039245-2

## DeliveryMessageBook Documentation papiNet Standard - Version 2.10

Element				Type	Required	Occurrence	Value Notes
			DeliveryMessage-ReferenceType	Attribute	<b>Required</b>	Single	CustomerReferenceNumber
			DocumentReference-Information	Group	Optional	Multiple	
			DocumentReferenceID	Element	<b>Required</b>	Single	0-06-039245-2
			Document-ReferenceIDType	Attribute	<b>Required</b>	Single	ISBN10Dash
			Quantity	Group	Optional	Single	
			QuantityInformation	Group	<b>Required</b>	Single	
			QuantityType	Attribute	<b>Required</b>	Single	Count
			QuantityType-Context	Attribute	Optional	Single	
			AdjustmentType	Attribute	Optional	Single	
			Value	Element	<b>Required</b>	Single	30240
			uOM	Attribute	<b>Required</b>	Single	Unit
			InformationalQuantity	Group	Optional	Multiple	
			TransportLoading-Characteristics	Group	Optional	Multiple	
			TransportOtherInstructions	Group	Optional	Multiple	
			PackageInformation	Group	<b>Required</b>	Multiple	
		<b>P1</b>	PackageType	Attribute	<b>Required</b>	Single	Pallet
			MixedProductPalletIndicator	Attribute	<b>Required</b>	Single	No
			Identifier	Element	<b>Required</b>	Multiple	P726001
			IdentifierCodeType	Attribute	<b>Required</b>	Single	Supplier
			IdentifierType	Attribute	<b>Required</b>	Single	Primary
			ItemCount	Group	<b>Required</b>	Single	
			Value	Element	<b>Required</b>	Single	60
			uOM	Attribute	<b>Required</b>	Single	Box
			Quantity	Group	<b>Required</b>	Single	
			QuantityInformation	Group	<b>Required</b>	Single	
			QuantityType	Attribute	<b>Required</b>	Single	GrossWeight
			QuantityType-Context	Attribute	Optional	Single	
			AdjustmentType	Attribute	Optional	Single	
			Value	Element	<b>Required</b>	Single	2700
			uOM	Attribute	<b>Required</b>	Single	Pound

## DeliveryMessageBook Documentation papiNet Standard - Version 2.10

Element				Type	Required	Occurrence	Value Notes
			<b>B1</b> BoxItem	Element	Optional	Multiple	
			Identifier	Element	Optional	Multiple	B726001
			PartyIdentifier	Element	<b>Required</b>	Multiple	Supplier
			Party- Identifier- Type	Attribute	<b>Required</b>	Single	Primary
			MachineID	Element	Optional	Single	
			ItemCount	Group	Optional	Single	
			Value	Element	<b>Required</b>	Single	36
			uOM	Attribute	<b>Required</b>	Single	Unit
			Quantity	Group	<b>Required</b>	Single	
			Quantity- Information	Group	<b>Required</b>	Single	
			Quantity- Type	Attribute	<b>Required</b>	Single	GrossWeight
			Quantity- Type- Context	Attribute	Optional	Single	
			Adjustment Type	Attribute	Optional	Single	
			Value	Element	<b>Required</b>	Single	45
			uOM	Attribute	<b>Required</b>	Single	Pound
			UnitItem	Group	Optional	Multiple	
			Product	Group	Optional	Single	
			Product- Identifier	Group	<b>Required</b>	Multiple	0-06- 039245-2
			Product- Identifier- Type	Element	<b>Required</b>	Single	CatalogueNu mber
			Agency	Attribute	<b>Required</b>	Single	Buyer
			ShipmentSummary	Group	Optional	Single	
			ShipmentSummary	Group	Optional	Single	
			TotalQuantity	Group	Optional	Single	
			QuantityInformation	Group	<b>Required</b>	Single	
			QuantityType	Attribute	<b>Required</b>	Single	Count
			QuantityType- Context	Attribute	Optional	Single	

## DeliveryMessageBook Documentation papiNet Standard - Version 2.10

Element										Type	Required	Occurrence	Value Notes
									AdjustmentType	Attribute	Optional	Single	
									Value	Element	<b>Required</b>	Single	30240
									uOM	Attribute	<b>Required</b>	Single	Unit
									TotalInformationalQuantity	Group	Optional	Multiple	
									DeliveryMessageSummary-Book	Group	<b>Required</b>	Single	
									TotalNumberOfShipments	Element	<b>Required</b>	Single	1
									TotalQuantity	Group	Optional	Single	
									QuantityInformation	Group	<b>Required</b>	Single	
									QuantityType	Attribute	<b>Required</b>	Single	Count
									QuantityTypeContext	Attribute	Optional	Single	
									AdjustmentType	Attribute	Optional	Single	
									Value	Element	<b>Required</b>	Single	30240
									uOM	Attribute	<b>Required</b>	Single	Unit
									TotalInformationalQuantity	Group	Optional	Multiple	
									TermsAndDisclaimers	Element	Optional	Multiple	

# DeliveryMessageBook Documentation

## papiNet Standard - Version 2.10

### Appendix C – DeliveryMessage, Financial Analysis

Element	Type	Required	Occurrence	Value/Notes
DeliveryMessage-Book	Root	<b>Required</b>	Single	
DeliveryMessageType	Attribute	<b>Required</b>	Single	DeliveryMessage
DeliveryMessageStatusType	Attribute	<b>Required</b>	Single	Original
Reissued	Attribute	Optional	Single	
Language	Attribute	Optional	Single	
DeliveryMessageHeader-Book	Group	<b>Required</b>	Single	
DeliveryMessageNumber	Element	<b>Required</b>	Single	RRDDM01202003001
DeliveryMessageDate	Group	<b>Required</b>	Single	
Date	Group	<b>Required</b>	Single	
Year	Element	<b>Required</b>	Single	2003
Month	Element	<b>Required</b>	Single	01
Date	Element	<b>Required</b>	Single	20
Time	Element	Optional	Single	
DeliveryMessageReference	Element	Optional	Multiple	007253656X
DeliveryMessageReferenceType	Attribute	Optional	Single	CustomerReferenceNumber
BuyerParty	Group	<b>Required</b>	Single	
PartyIdentifier	Element	Optional	Multiple	3456789
PartyIdentifierType	Attribute	Optional	Single	StandardAddressNumber
NameAddress	Group	<b>Required</b>	Single	
Name1	Element	<b>Required</b>	Single	McGraw-Hill Education
SupplierParty	Group	<b>Required</b>	Single	
PartyIdentifier	Element	Optional	Multiple	2234135
PartyIdentifierType	Attribute	Optional	Single	StandardAddressNumber
NameAddress	Group	<b>Required</b>	Single	
Name1	Element	<b>Required</b>	Single	RR DONNELLEY & SONS CO
ShipToCharacteristics	Group	<b>Required</b>	Single	
ShipToParty	Group	<b>Required</b>	Single	
PartyIdentifier	Element	Optional	Multiple	34567890010
PartyIdentifierType	Attribute	Optional	Single	StandardAddressNumber
NameAddress	Group	<b>Required</b>	Single	
Name1	Element	<b>Required</b>	Single	McGraw-Hill Gahanna Warehouse
CountryOfOrigin	Element	Optional	Single	
CountryOfDestination	Element	Optional	Single	
CountryOfConsumption	Element	Optional	Single	
Insurance	Group	Optional	Single	

## DeliveryMessageBook Documentation papiNet Standard - Version 2.10

Element		Type	Required	Occurrence	Value/Notes
	DeliveryLeg	Group	Required	Multiple	
	DeliveryLegSequenceNumber	Element	Required	Single	001
	DeliveryOrigin	Group	Optional	Single	
	Date	Group	Required	Single	
	Year	Element	Required	Single	2003
	Month	Element	Required	Single	01
	Date	Element	Required	Single	21
	Time	Element	Optional	Single	
	LocationParty	Element	Required	Single	
	PartyIdentifier	Element	Optional	Multiple	2234138
	PartyIdentifierType	Attribute	Optional	Single	StandardAddressNumber
	NameAddress	Group	Required	Single	
	Name1	Element	Required	Single	RRD - Crawfordsville
	CarrierParty	Element	Optional	Single	
	PartyIdentifier	Element	Optional	Multiple	555325641
	PartyIdentifierType	Attribute	Optional	Single	DunsNumber
	NameAddress	Group	Required	Single	
	Name1	Element	Required	Single	ROADWAY EXPRESS
	OtherParty	Element	Optional	Multiple	
	TransportModeCharacteristics	Group	Optional	Single	
	TransportModeType	Attribute	Required	Single	Road
	TransportVehicleCharacteristics	Group	Optional	Single	
	TransportVehicleType	Attribute	Required	Single	TruckTrailer
	TransportVehicleCode	Element	Optional	Single	
	TransportVehicleIdentifier	Element	Optional	Multiple	IN4567AD
	TransportVehicleIdentifierType	Attribute	Required	Single	LicensePlateNumber
	TransportVehicleText	Element	Optional	Single	Indiana
	DeliveryDestination	Group	Optional	Single	
	LocationParty	Element	Required	Single	
	PartyIdentifier	Element	Optional	Multiple	34567890010
	PartyIdentifierType	Attribute	Optional	Single	StandardAddressNumber
	NameAddress	Group	Required	Single	
	Name1	Element	Required	Single	McGraw-Hill Gahanna Warehouse
	DeliveryDateWindow	Group	Optional	Multiple	
	DeliveryDateType	Attribute	Required	Single	EstimatedTimeOfArrival
1	DateTimeRange	Group	Optional	Single	

## DeliveryMessageBook Documentation

### papiNet Standard - Version 2.10

Element	Type	Required	Occurrence	Value/Notes
DateTimeFrom	Group	Required	Single	
Date	Group	Required	Single	
Year	Element	Required	Single	2003
Month	Element	Required	Single	01
Date	Element	Required	Single	21
Time	Element	Optional	Single	13:00
DateTimeTo	Group	Required	Single	
Date	Group	Required	Single	
Year	Element	Required	Single	2003
Month	Element	Required	Single	01
Date	Element	Required	Single	21
Time	Element	Optional	Single	16:00
AdditionalText	Element	Optional	Multiple	
DeliveryMessageShipment	Group	Required	Multiple	
DeliveryShipmentId	Element	Required	Single	RRDCRFD012103A045
DeliveryShipmentLineItem	Element	Required	Multiple	
DeliveryShipmentLineItemNumber	Element	Required	Single	001
PurchaseOrderInformation	Group	Required	Single	
PurchaseOrderNumber	Element	Required	Single	X4312657
PurchaseOrderReleaseNumber	Element	Optional	Single	
PurchaseOrderIssuedDate	Group	Optional	Single	
Year	Element	Required	Single	2002
Month	Element	Required	Single	12
Date	Element	Required	Single	13
PurchaseOrderReference	Element	Optional	Multiple	
PurchaseOrderReferenceType	Attribute	Required	Single	
PurchaseOrderLineItemNumber	Element	Optional	Single	
DeliveryMessageReference	Element	Optional	Multiple	007253656X
DeliveryMessageReferenceType	Attribute	Required	Single	CustomerReferenceNumber
DocumentReferenceInformation	Group	Optional	Multiple	
DocumentReferenceID	Element	Required	Single	007253656X
DocumentReferenceIDType	Attribute	Required	Single	ISBN10
DocumentReferenceIDLinItemNumber	Element	Optional	Single	
Quantity	Group	Optional	Single	
QuantityInformation	Group	Required	Single	
QuantityType	Attribute	Required	Single	Count
QuantityTypeContext	Attribute	Optional	Single	

## DeliveryMessageBook Documentation

### papiNet Standard - Version 2.10

Element		Type	Required	Occurrence	Value/Notes
	AdjustmentType	Attribute	Optional	Single	
	Value	Element	<b>Required</b>	Single	32
	uOM	Attribute	<b>Required</b>	Single	PalletUnit
	InformationalQuantity	Group	Optional	Multiple	
	QuantityInformation	Group	<b>Required</b>	Single	
	QuantityType	Attribute	<b>Required</b>	Single	Count
	QuantityTypeContext	Attribute	Optional	Single	
	AdjustmentType	Attribute	Optional	Single	
	Value	Element	<b>Required</b>	Single	40790
	uOM	Attribute	<b>Required</b>	Single	Unit
	InformationalQuantity	Group	Optional	Multiple	
	QuantityInformation	Group	<b>Required</b>	Single	
	QuantityType	Attribute	<b>Required</b>	Single	GrossWeight
	QuantityTypeContext	Attribute	Optional	Single	
	AdjustmentType	Attribute	Optional	Single	
	Value	Element	<b>Required</b>	Single	48948
	uOM	Attribute	<b>Required</b>	Single	Pound
	PackageInformation	Group	<b>Required</b>	Multiple	
	P1 PackageType	Attribute	<b>Required</b>	Single	Pallet
	MixedProductPalletIndicator	Attribute	<b>Required</b>	Single	No
	Identifier	Element	<b>Required</b>	Multiple	multiplepallets
	IdentifierCodeType	Attribute	<b>Required</b>	Single	Supplier
	IdentifierType	Attribute	<b>Required</b>	Single	Primary
	ItemCount	Group	<b>Required</b>	Single	
	Value	Element	<b>Required</b>	Single	31
	uOM	Attribute	<b>Required</b>	Single	PalletUnit
	Quantity	Group	<b>Required</b>	Single	
	QuantityInformation	Group	<b>Required</b>	Single	
	QuantityType	Attribute	<b>Required</b>	Single	Count
	QuantityTypeContext	Attribute	Optional	Single	
	AdjustmentType	Attribute	Optional	Single	
	Value	Element	<b>Required</b>	Single	40
	uOM	Attribute	<b>Required</b>	Single	Box
	InformationalQuantity	Group	Optional	Multiple	Measurement construct
	QuantityType	Attribute	<b>Required</b>	Single	GrossWeight
	QuantityTypeContext	Attribute	Optional	Single	
	AdjustmentType	Attribute	Optional	Single	
	Value	Element	<b>Required</b>	Single	1536
	uOM	Attribute	<b>Required</b>	Single	Pound
	BoxItem	Element	Optional	Multiple	
	ItemCount	Group	Optional	Single	

## DeliveryMessageBook Documentation papiNet Standard - Version 2.10

Element					Type	Required	Occurrence	Value/Notes
				Value	Element	Required	Single	40
				uOM	Attribute	Required	Single	Box
				Quantity	Group	Required	Single	
				QuantityInformation	Group	Required	Single	
				QuantityType	Attribute	Required	Single	GrossWeight
				QuantityTypeContext	Attribute	Optional	Single	
				AdjustmentType	Attribute	Optional	Single	
				Value	Element	Required	Single	39
				uOM	Attribute	Required	Single	Pound
				UnitItem	Group	Optional	Multiple	
				Product	Group	Optional	Single	
				ProductIdentifier	Group	Required	Multiple	007253656X
				ProductIdentifierType	Element	Required	Single	CatalogueNumber
				Agency	Attribute	Required	Single	Buyer
				Quantity	Group	Required	Single	
				QuantityInformation	Group	Required	Single	
				QuantityType	Attribute	Required	Single	Count
				QuantityType-Context	Attribute	Optional	Single	
				AdjustmentType	Attribute	Optional	Single	
				Value	Element	Required	Single	32
				uOM	Attribute	Required	Single	Unit
				P2 PackageType	Attribute	Required	Single	Pallet
				MixedProductPalletIndicator	Attribute	Required	Single	No
				Identifier	Element	Required	Multiple	RRDP012003D4312
				IdentifierCodeType	Attribute	Required	Single	Supplier
				IdentifierType	Attribute	Required	Single	Primary
				ItemCount	Group	Required	Single	
				Value	Element	Required	Single	1
				uOM	Attribute	Required	Single	PalletUnit
				Quantity	Group	Required	Single	
				QuantityInformation	Group	Required	Single	
				QuantityType	Attribute	Required	Single	Count
				QuantityTypeContext	Attribute	Optional	Single	
				AdjustmentType	Attribute	Optional	Single	
				Value	Element	Required	Single	35
				uOM	Attribute	Required	Single	Box
				InformationalQuantity	Group	Optional	Multiple	Measurement construct
				QuantityType	Attribute	Required	Single	GrossWeight
				QuantityTypeContext	Attribute	Optional	Single	

## DeliveryMessageBook Documentation papiNet Standard - Version 2.10

Element					Type	Required	Occurrence	Value/Notes
				AdjustmentType	Attribute	Optional	Single	
				Value	Element	<b>Required</b>	Single	1332
				uOM	Attribute	<b>Required</b>	Single	Pound
			<b>B1</b> BoxItem		Element	Optional	Multiple	
				ItemCount	Group	Optional	Single	
				Value	Element	<b>Required</b>	Single	34
				uOM	Attribute	<b>Required</b>	Single	Box
			Quantity		Group	<b>Required</b>	Single	
				QuantityInformation	Group	<b>Required</b>	Single	
				QuantityType	Attribute	<b>Required</b>	Single	GrossWeight
				QuantityTypeContext	Attribute	Optional	Single	
				AdjustmentType	Attribute	Optional	Single	
				Value	Element	<b>Required</b>	Single	39
				uOM	Attribute	<b>Required</b>	Single	Pound
			UnitItem		Group	Optional	Multiple	
				Product	Group	Optional	Single	
				ProductIdentifier	Group	<b>Required</b>	Multiple	007253656X
				ProductIdentifierType	Element	<b>Required</b>	Single	CatalogueNumber
				Agency	Attribute	<b>Required</b>	Single	Buyer
			Quantity		Group	<b>Required</b>	Single	
				QuantityInformation	Group	<b>Required</b>	Single	
				QuantityType	Attribute	<b>Required</b>	Single	Count
				QuantityType-Context	Attribute	Optional	Single	
				AdjustmentType	Attribute	Optional	Single	
				Value	Element	<b>Required</b>	Single	32
				uOM	Attribute	<b>Required</b>	Single	Unit
			<b>B2</b> BoxItem		Element	Optional	Multiple	
				ItemCount	Group	Optional	Single	
				Value	Element	<b>Required</b>	Single	1
				uOM	Attribute	<b>Required</b>	Single	Box
			Quantity		Group	<b>Required</b>	Single	
				QuantityInformation	Group	<b>Required</b>	Single	
				QuantityType	Attribute	<b>Required</b>	Single	GrossWeight
				QuantityTypeContext	Attribute	Optional	Single	
				AdjustmentType	Attribute	Optional	Single	
				Value	Element	<b>Required</b>	Single	27
				uOM	Attribute	<b>Required</b>	Single	Pound
			UnitItem		Group	Optional	Multiple	
				Product	Group	Optional	Single	
				ProductIdentifier	Group	<b>Required</b>	Multiple	007253656X

## DeliveryMessageBook Documentation papiNet Standard - Version 2.10

Element										Type	Required	Occurrence	Value/Notes
									ProductIdentifierType	Element	Required	Single	CatalogueNumber
									Agency	Attribute	Required	Single	Buyer
									Quantity	Group	Required	Single	
									QuantityInformation	Group	Required	Single	
									QuantityType	Attribute	Required	Single	Count
									QuantityType-Context	Attribute	Optional	Single	
									AdjustmentType	Attribute	Optional	Single	
									Value	Element	Required	Single	22
									uOM	Attribute	Required	Single	Unit
									ShipmentSummary	Group	Optional	Single	
									TotalQuantity	Group	Optional	Single	
									QuantityInformation	Group	Required	Single	
									QuantityType	Attribute	Required	Single	Count
									Value	Element	Required	Single	40790
									uOM	Attribute	Required	Single	Unit
									TotalInformationalQuantity	Group	Optional	Multiple	
									DeliveryMessageSummary-Book	Group	Required	Single	
									TotalNumberOfShipments	Element	Required	Single	1
									TotalQuantity	Group	Optional	Single	
									QuantityInformation	Group	Required	Single	
									QuantityType	Attribute	Required	Single	Count
									Value	Element	Required	Single	40790
									uOM	Attribute	Required	Single	Unit
									TotalInformationalQuantity	Group	Optional	Multiple	
									TermsAndDisclaimers	Element	Optional	Multiple	